

Inter-Island Environment Meeting

Sark



What does 'good' look like?

Assessing the condition of habitats in Guernsey

Julia Henney

Senior Natural Environment Officer, States of Guernsey



Mr & Mrs Moerman

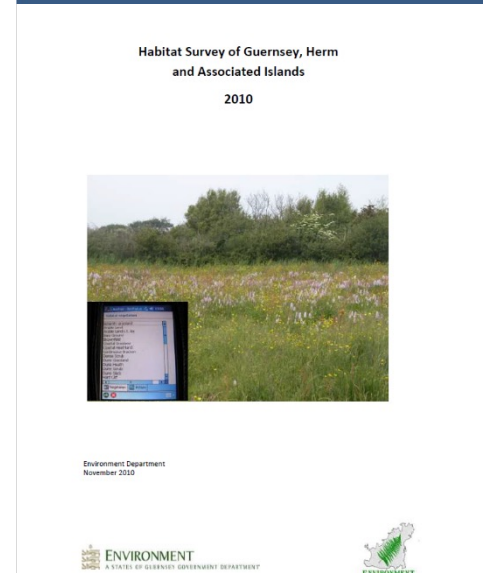
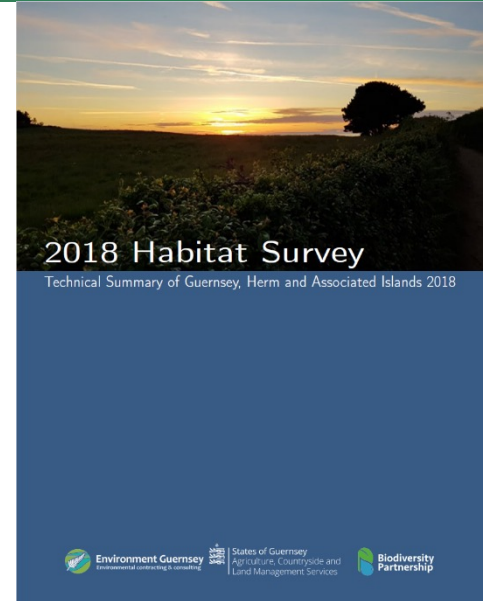
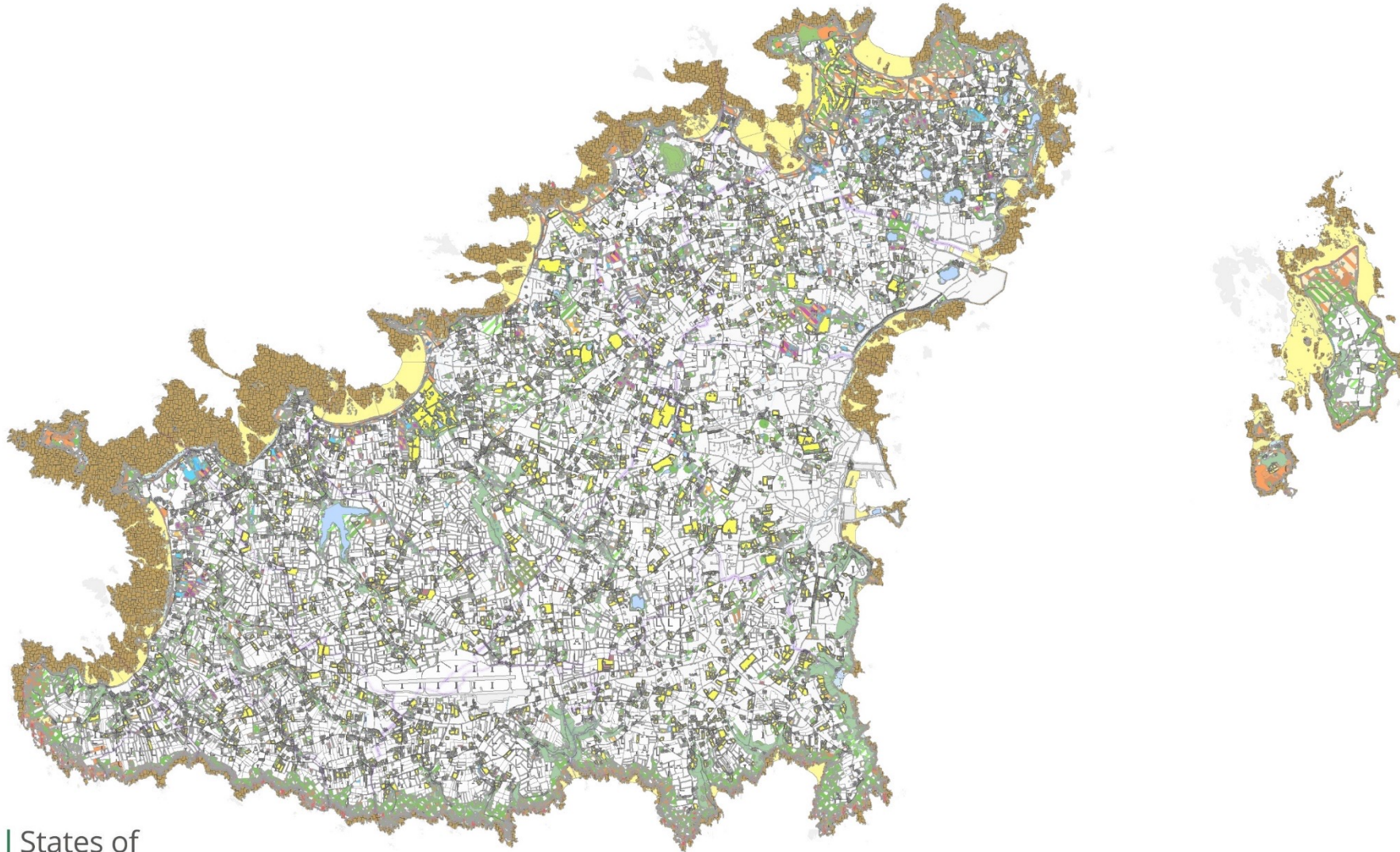
Supported by



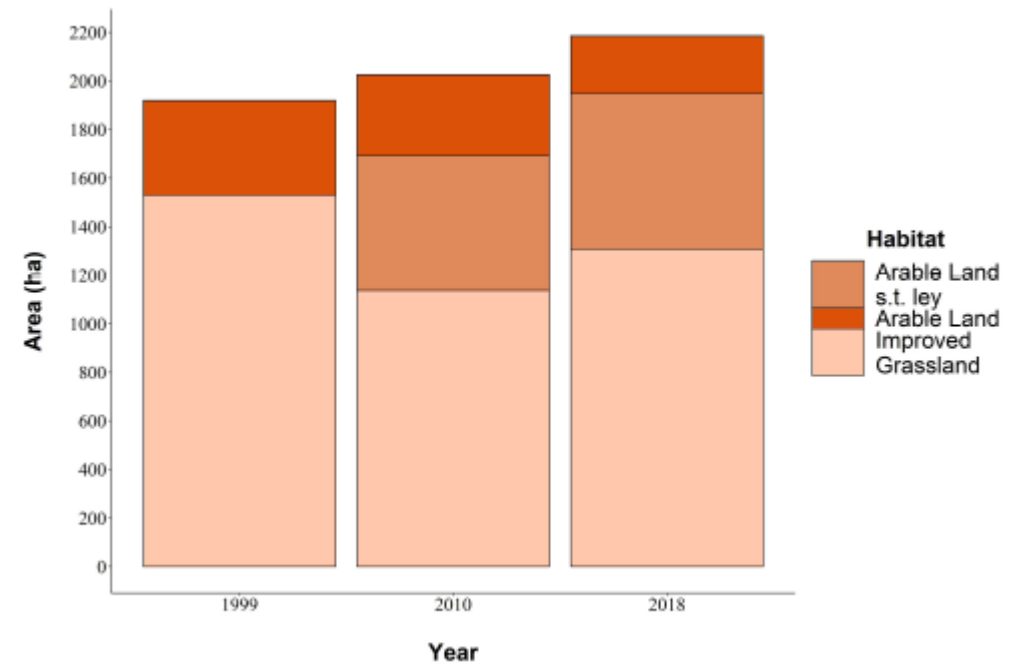
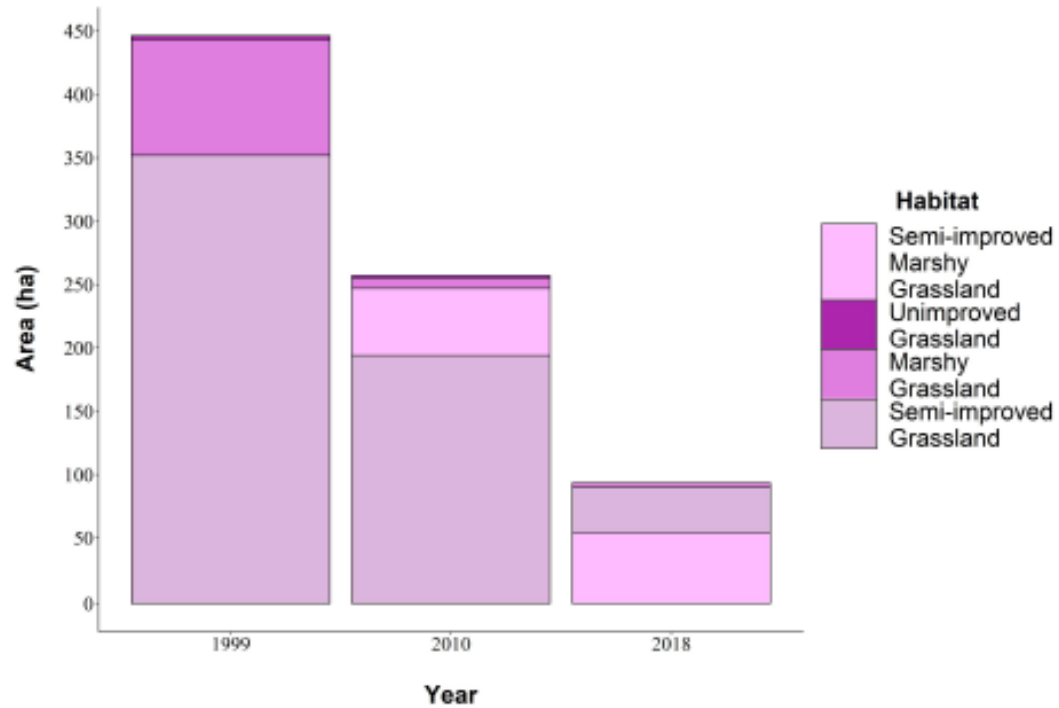
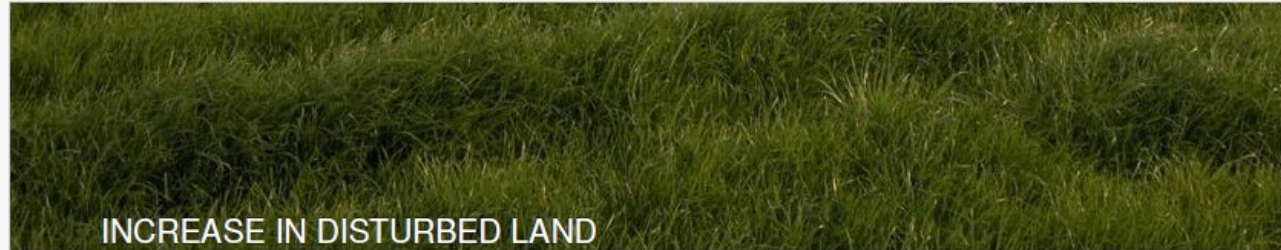
Le Vallon d'Or Holidays



What do we already know?



What do we already know?



What can a condition assessment tell us?

Measure change within a habitat type

Identify areas of 'good' habitat – for benchmarking and protection

Identify areas of 'moderate' or 'poor' habitat – opportunity for restoration

Biodiversity Net Gain

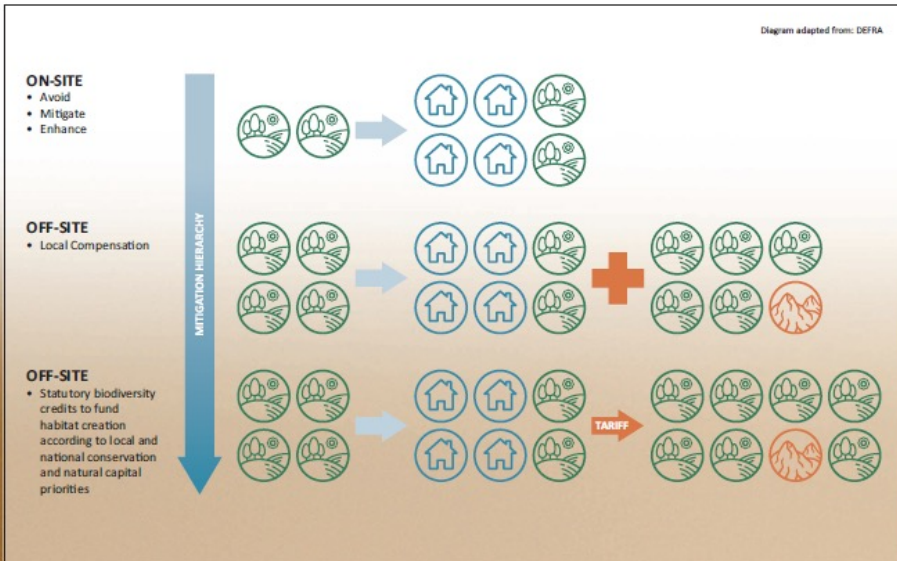
Natural Capital Atlas



States of
Guernsey



Biodiversity Net Gain



Biodiversity Net Gain

Historically, it has been challenging to afford natural heritage the same level of planning consideration and preservation as built heritage.

Biodiversity Net Gain is a process that applies a standardised biodiversity unit to ecological features based on their area and condition. It is an approach to development that leaves biodiversity in a better state than before.



The Biodiversity Metric 4.0

User Guide

First published March 2023

Natural England Joint Publication JP039

Condition Assessment Methodology

Aim

To understand the condition of habitats in Guernsey.

Objectives

1. Undertake a condition assessment of a subset of each Phase 1 habitat type in Guernsey
2. To undertake a critical analysis of the methodology and its use within Guernsey

Tender published in Q2 2022, field work undertaken throughout 2022 and 2023.



Condition Assessment Methodology

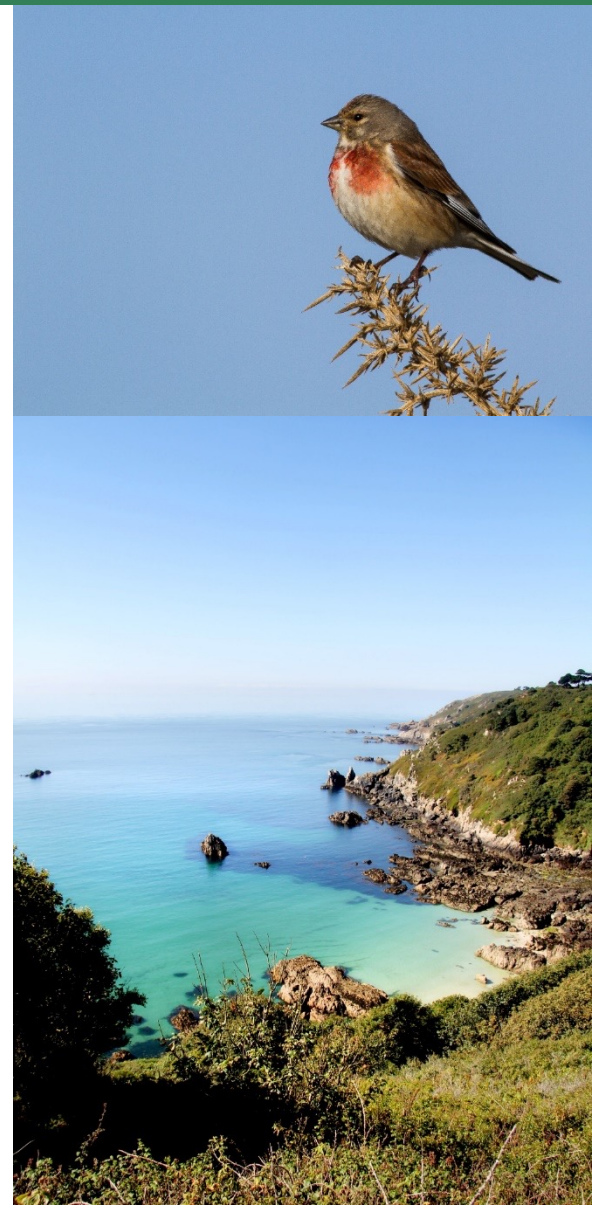
Where to survey?

15 sites for each Phase 1 habitat classification

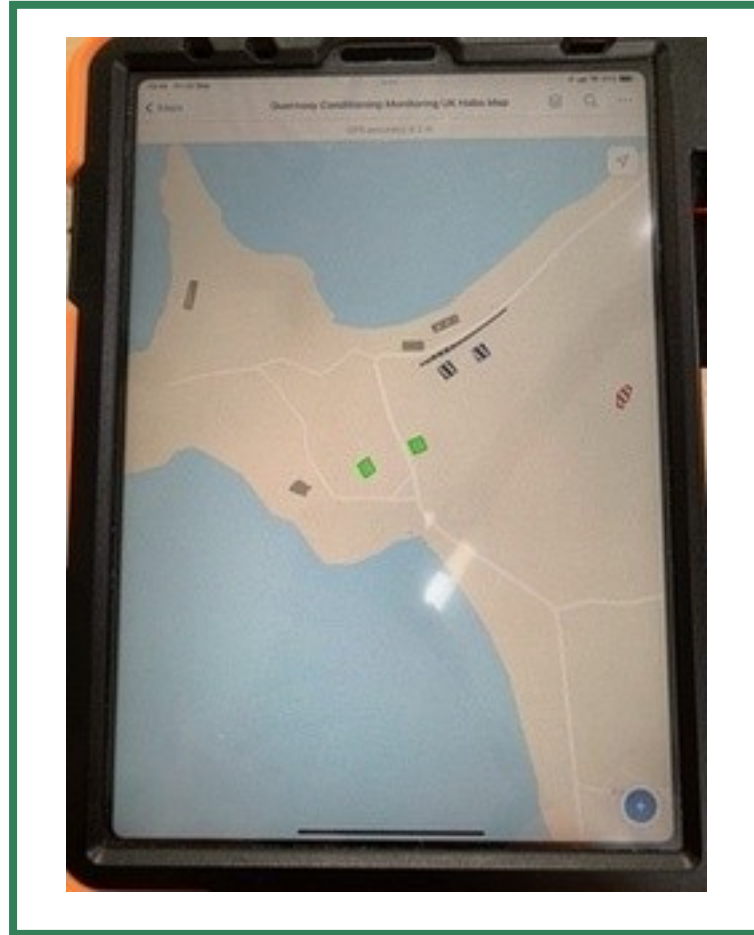
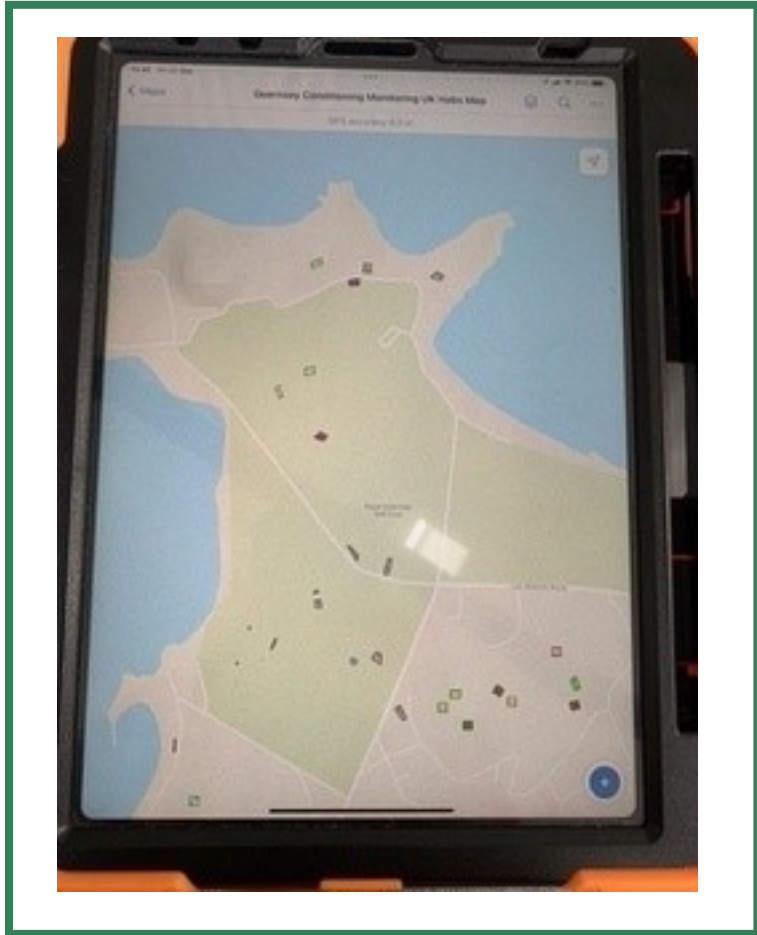
- 5 x SSS designated
- 5 x ABI designated
- 5 x undesignated

Aim for a range of different landownership too

400m² minimum mapping unit (MMU) where possible, boundaries marked on a map



Condition Assessment Methodology



Condition Assessment Methodology

Habitat Type (Habitats in bold are Priority Habitats)	Condition Sheet	Link to sheet (1 habitat parcel)	Link to sheet (up to 10 habitat parcels)
Area habitats			
Broad habitat type: Cropland			
Cropland - Arable field margins cultivated annually	Condition Assessment N/A	N/A	N/A
Cropland - Arable field margins game bird mix			
Cropland - Arable field margins pollen and nectar			
Cropland - Arable field margins tussocky			
Cropland - Cereal crops			
Cropland - Winter stubble			
Cropland - Horticulture			
Cropland - Intensive orchards			
Cropland - Non-cereal crops			
Cropland - Temporary grass and clover leys			
Broad habitat type: Grassland			
Grassland - Bracken	Condition Assessment N/A	N/A	N/A
Grassland - Floodplain wetland mosaic and CFGM	Use Wetland condition sheet (plus Ditch condition sheet for any ditches). If the area meets the definition of another high / very high distinctiveness type, record and treat as the relevant habitat type within the metric instead.	Tab 23A	Tab 23B
Grassland - Lowland calcareous grassland	Grassland Medium/High/Very High distinctiveness	Tab 6A	Tab 6B
Grassland - Lowland dry acid grassland			
Grassland - Lowland meadows			
Grassland - Modified grassland	Grassland Low distinctiveness	Tab 5A	Tab 5B
Grassland - Other lowland acid grassland	Grassland Medium/High/Very High distinctiveness	Tab 6A	Tab 6B
Grassland - Other neutral grassland			
Grassland - Tall herb communities (H6430)	Orchard	Tab 17A	Tab 17B
Grassland - Upland acid grassland	Grassland Medium/High/Very High distinctiveness	Tab 6A	Tab 6B
Grassland - Upland calcareous grassland			
Grassland - Upland hay meadows			

Site name/location	Dense Scrub 1	Onsite/offsite	
Central grid reference of habitat	49.423432, -2.536546	Unique polygon reference	
Limitations (if applicable)	Impenetrable	Metric 3.0 survey reference (if condition assessment of this polygon relates to a wider habitat survey)	
Habitat Description			
h3a - BLACKTHORN SCRUB. Dense vegetation with adjacent footpaths. Some Hawthorn, ivy, Guernsey Elm.			
See UKHab			
For sea buckthorn scrub see: Habitats Directive Annex 1 definition			
Condition Assessment Criteria	Condition Achieved (Y/N)	Notes/Justification	
1 Habitat is representative of UKHab description (where in its natural range). There are at least three woody species, with no one species comprising more than 75% of the cover (except common juniper, sea buckthorn or box, which can be up to 100% cover).	Y	Dominated by Hawthorn with ivy and elm present	
2 There is a good age range - all of the following are present: seedlings, young shrubs and mature shrubs.	N	Mostly mature Blackthorn	
3 There is an absence of invasive non-native species (as listed on Schedule 9 of WCA, 1981) and species indicative of sub-optimal condition make up less than 5% of ground cover.	Y	No invasives seen	
4 The scrub has a well-developed edge with scattered scrub and tall grassland and/or herbs present between the scrub and adjacent habitat(s).	Y	Reasonable edge to adjoining bracken/bramble scrub	
5 There are clearings, glades or rides present within the scrub, providing sheltered edges.	N	No glades within polygon	
Number of criteria passed			3
Condition Assessment Result	Condition Assessment Score	Score Achieved x/√	
Passes 5 of 5 criteria	Good (3)		
Passes 3 or 4 of 5 criteria	Moderate (2)	3 - moderate	
Passes 0, 1 or 2 of 5 criteria	Poor (1)		
Suggested enhancement interventions to improve condition score			
Some rotational cutting to create glades and mixed age scrub			

Condition Assessment Results

Limitations

Too few sites

Habitats too small

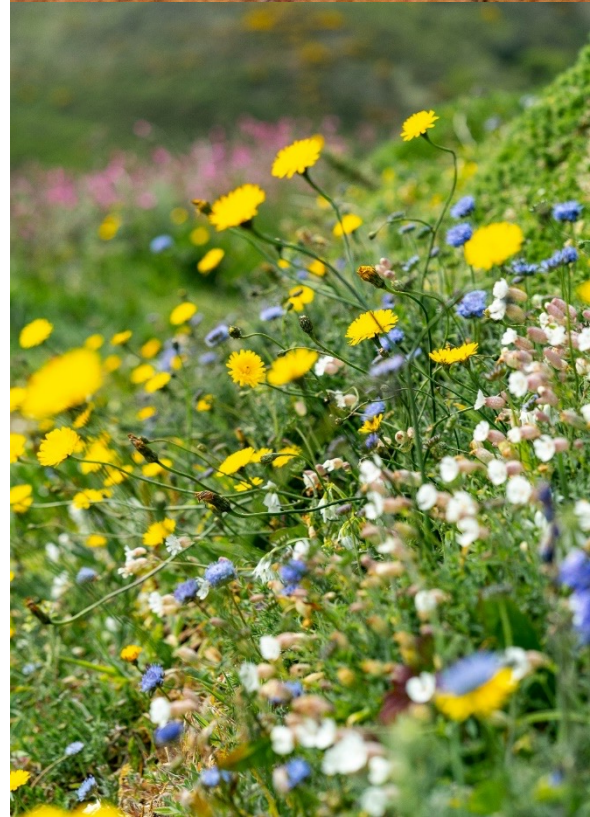
Not a range in ownership or designation

Access constraints

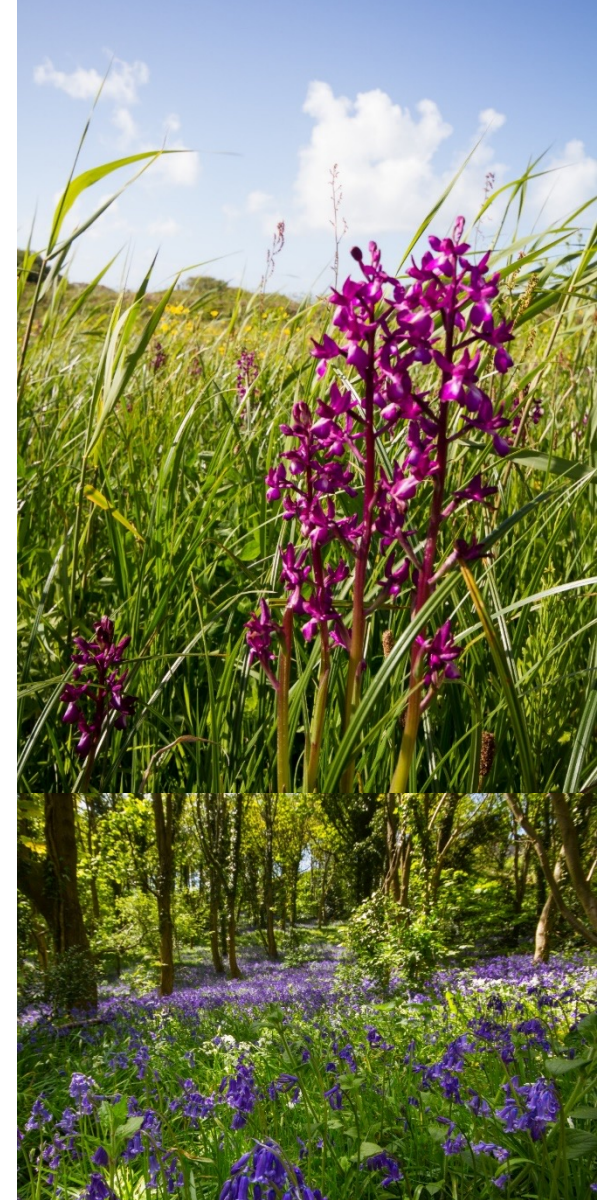
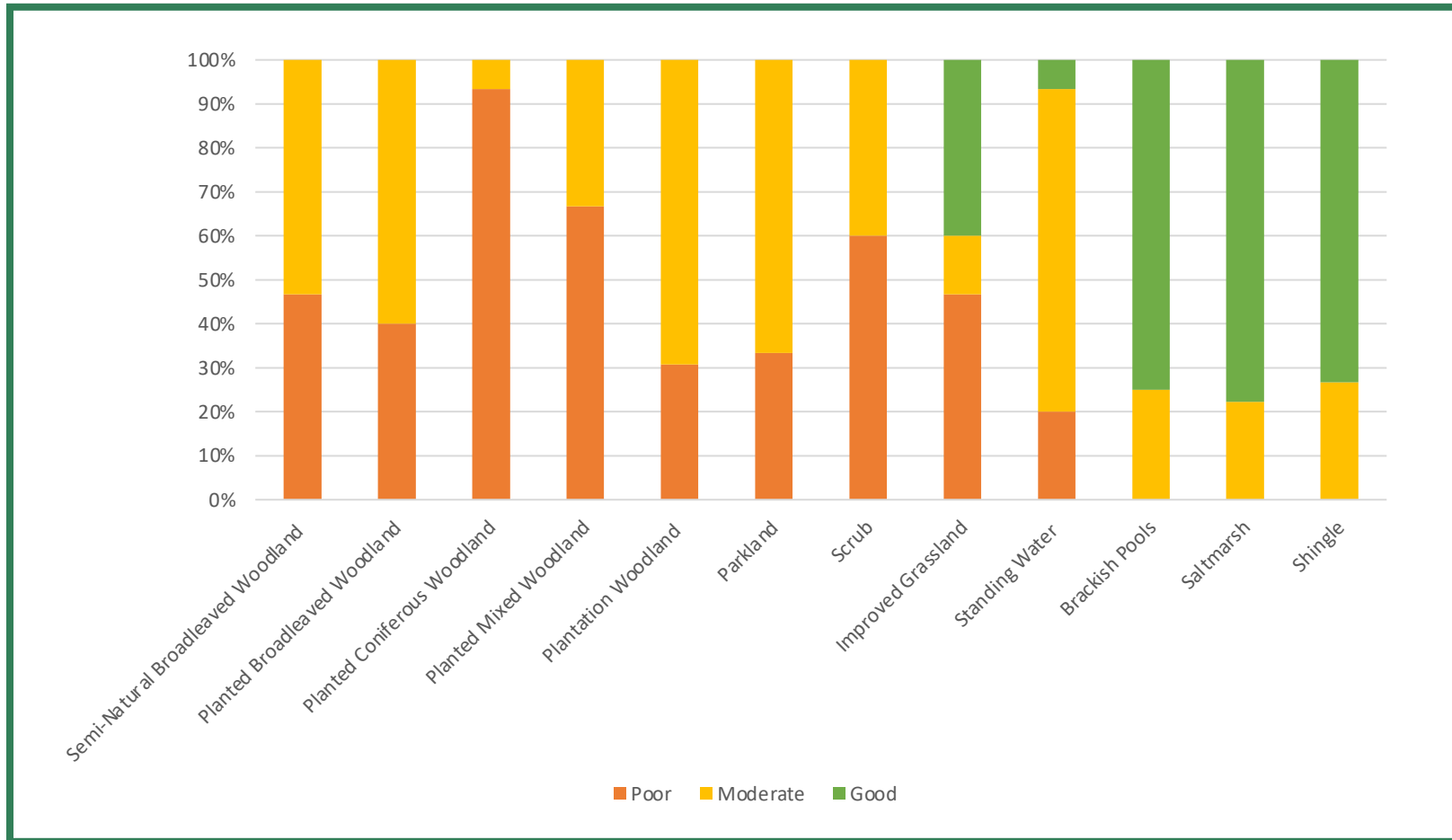


Condition Assessment Results

Previous Phase 1 Habitat Assessment (2018)	Site Number	Latitude	Longitude	Site Designation	Site Ownership	Date Assessed	Current Phase 1 Assessment	UKHab Assessment & Code	Habitat Condition Assessment
Saltmarsh	1	49.459449	-2.664798	SSS	Crown/SOG	07/10/22	Saltmarsh	Glasswort and other annuals colonizing mud	Good
	2	49.459081	-2.646659	SSS	LSG	24/10/22	Saltmarsh	Glasswort and other annuals colonizing mud	Good
	3	49.495915	-2.567904	SSS	SOG	16/10/22	Saltmarsh	Glasswort and other annuals colonizing mud	Good
	4	49.491718		SSS	LSG	18/10/22	Saltmarsh	Glasswort and other annuals colonizing mud	Moderate
	5	49.491934	-2.540922	SSS	LSG	18/10/22	Saltmarsh	Glasswort and other annuals colonizing mud	Good
	6	49.491543	-2.540766	SSS	Private	18/10/22	Saltmarsh	Glasswort and other annuals colonizing mud	Good
	7	49.491076	-2.540291	SSS	Private	18/10/22	Saltmarsh	Glasswort and other annuals colonizing mud	Good
	8	49.487626	-2.584274	SSS	SOG	18/10/22	Saltmarsh	Glasswort and other annuals colonizing mud	Good
	9	49.4564956	-2.6517157	SSS	Private	31/08/22	Saltmarsh	Glasswort and other annuals colonizing mud	Moderate

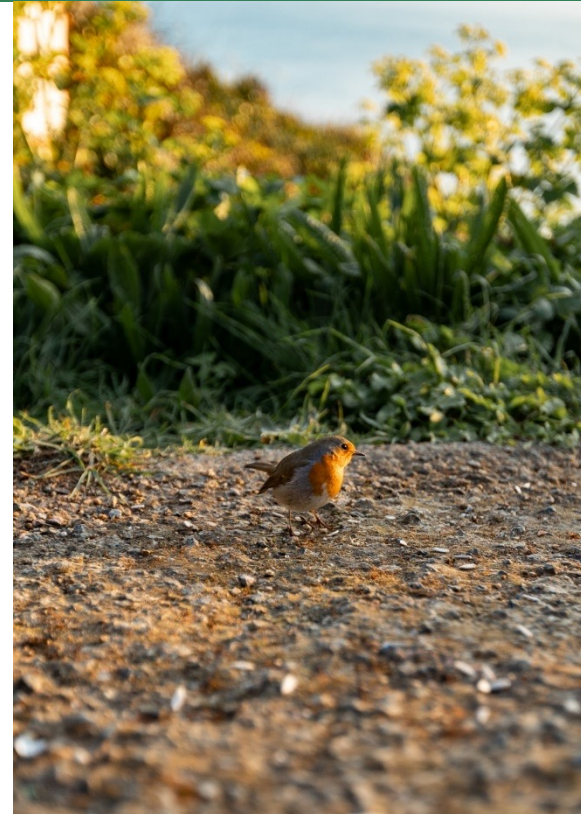


Condition Assessment Results



What Next?

- Finalise and publish report
- UKHabs?
- Should we use Habitat Condition Assessments?
- BNG?
- Natural Capital Atlas?
- Baseline 'good' condition
- Management recommendations



Thanks



Environment Guernsey
Environmental contracting & consulting

Photos kindly shared with permission from Rod Ferbrache, Mish Hooper, Mike Cunningham, Andy Marquis, Tom Coule and Visit Guernsey

