

Inter-Island Environment Meeting

Sark



Jersey National Park Past, Present and Future

John Pinel
Executive Officer
Jersey National Park Ltd.

Supported by



Mr & Mrs Moerman



Le Vallon d'Or Holidays



Jersey National Park



John Pinel, Executive Officer

Protected Areas

Earth.org (2019)

"the greatest success story in the 21st century is the exponential growth of protected areas. Life population has declined by 69% on average since 1970. World nations have legally designated over 202,000 protected lands covering 19.8 million square kilometers, or 15% of Earth's surface

The Survey was followed in 1962 by the Plan. Proposals that applied specifically to the St. Ouen's Bay Area were as follows:-

1. The inclusion of nearly all the land between the view line and the coast in the "Green Zone".

1.5 The key to the successful resolution of the many conflicts and pressures that have had, and are still having, a destructive effect on the landscape is a proper appreciation of the area's identity – its uniqueness and distinctiveness. The Committee is firmly of the opinion that the area should be designated "a special place". This might be thought of as a small but important "National Park" – "Le Parc des Mielles". This designation recognises the uniqueness of the area and alerts the public to the fact that the landscape is being actively conserved and protected. The special status and identity that this will give the area should enable a greater degree of co-operation to be established between landowners, residents, authorities and those who spend their leisure time there.

The Plan for the Island was presented to the States and, with amendments, became the Jersey Development Plan of 26th March, 1963.

Jersey Island Plan 2011

- **1. The conservation and enhancement of the natural beauty, wildlife and cultural heritage of the National Park;**
- **2. To promote opportunities for the understanding and enjoyment of the special qualities of the National Park by the public.**



Map 2.4 Coastal National Park Areas

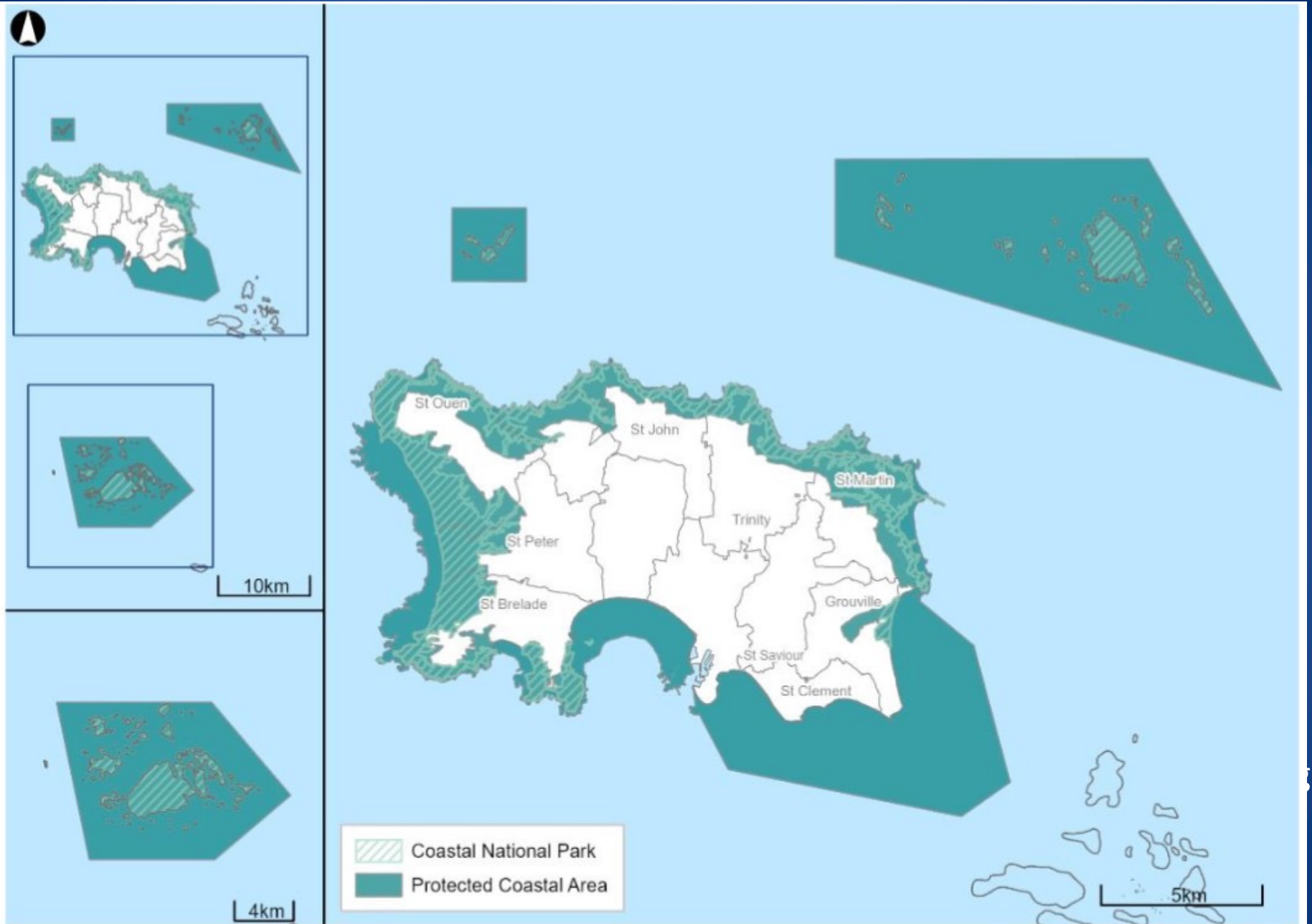


Figure NE8 – Protected Coastal Area and Coastal National Park

Bridging Island Plan 2022

Green infrastructure and network strategy

To realise the full extent of benefits, **a green infrastructure network should be strategically planned, designed and managed as a multi-functional resource.** To support the policies of the Island Plan, the Minister for Environment commits to preparing a wider green infrastructure and network strategy, to identify and map the existing strategic network of green infrastructure across the island, along with an assessment of the interrelationships between these spaces.

The strategy will identify priorities for addressing deficiencies and should set out positive measures and opportunities for the design and management of all forms of green infrastructure. **It will provide a coherent strategy for the delivery of green networks, across a range of initiatives**

Proposal 13 – Green infrastructure and network strategy

The Minister for Environment commits to preparing a wider green infrastructure and network strategy, to identify the existing strategic network of green infrastructure and to outline priorities for addressing deficiencies through positive design and management.



Source: Bridging Island

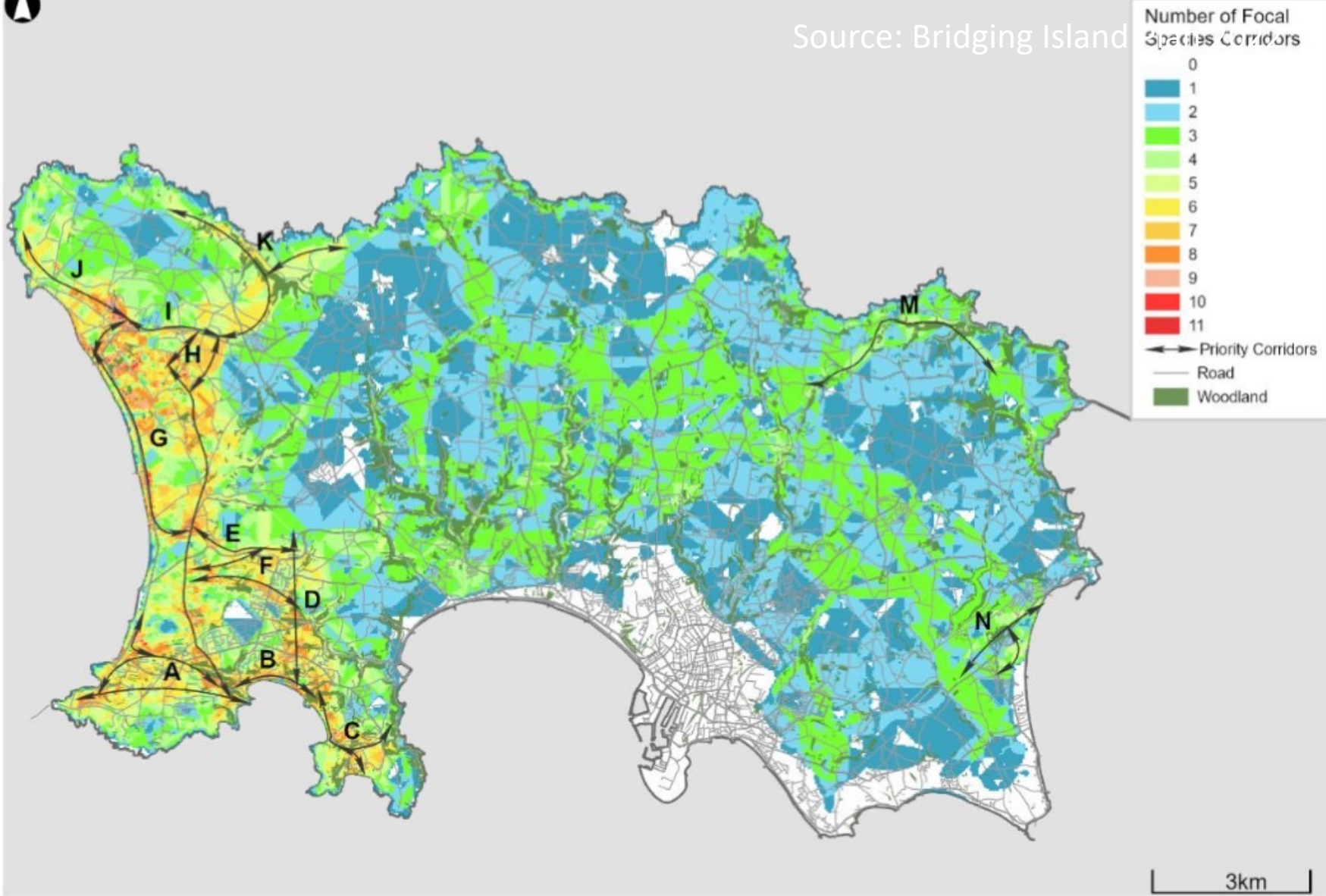
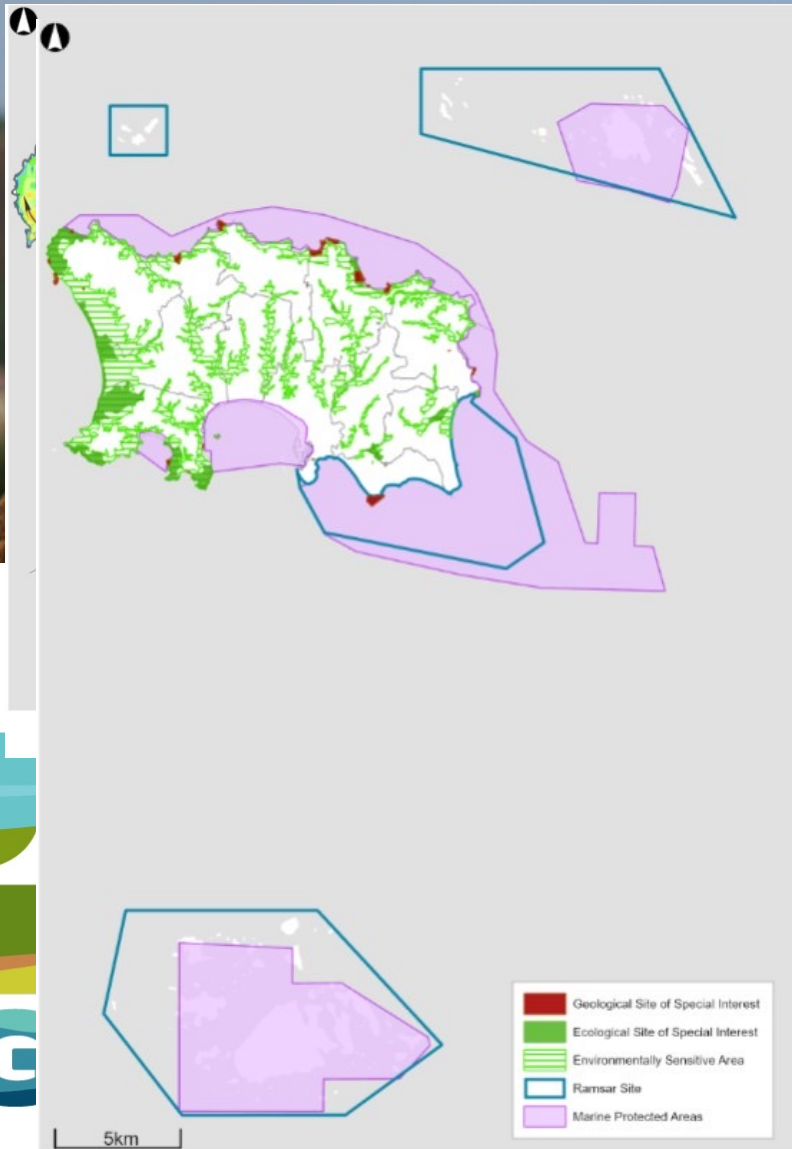


Figure NE4: Jersey multi-species distribution, habitat suitability and connectivity modelling

Geological



Jersey National Park

