

Archive of Glass Magic
Lantern Slides, Stereoscopic Magic
Lantern Slides & Stereoscopic
Photographs on Card

Index

A Brief History of Magic Lantern Projectors 1

Magic Lantern Slides 2

Stereoscopic Images & Viewers 2

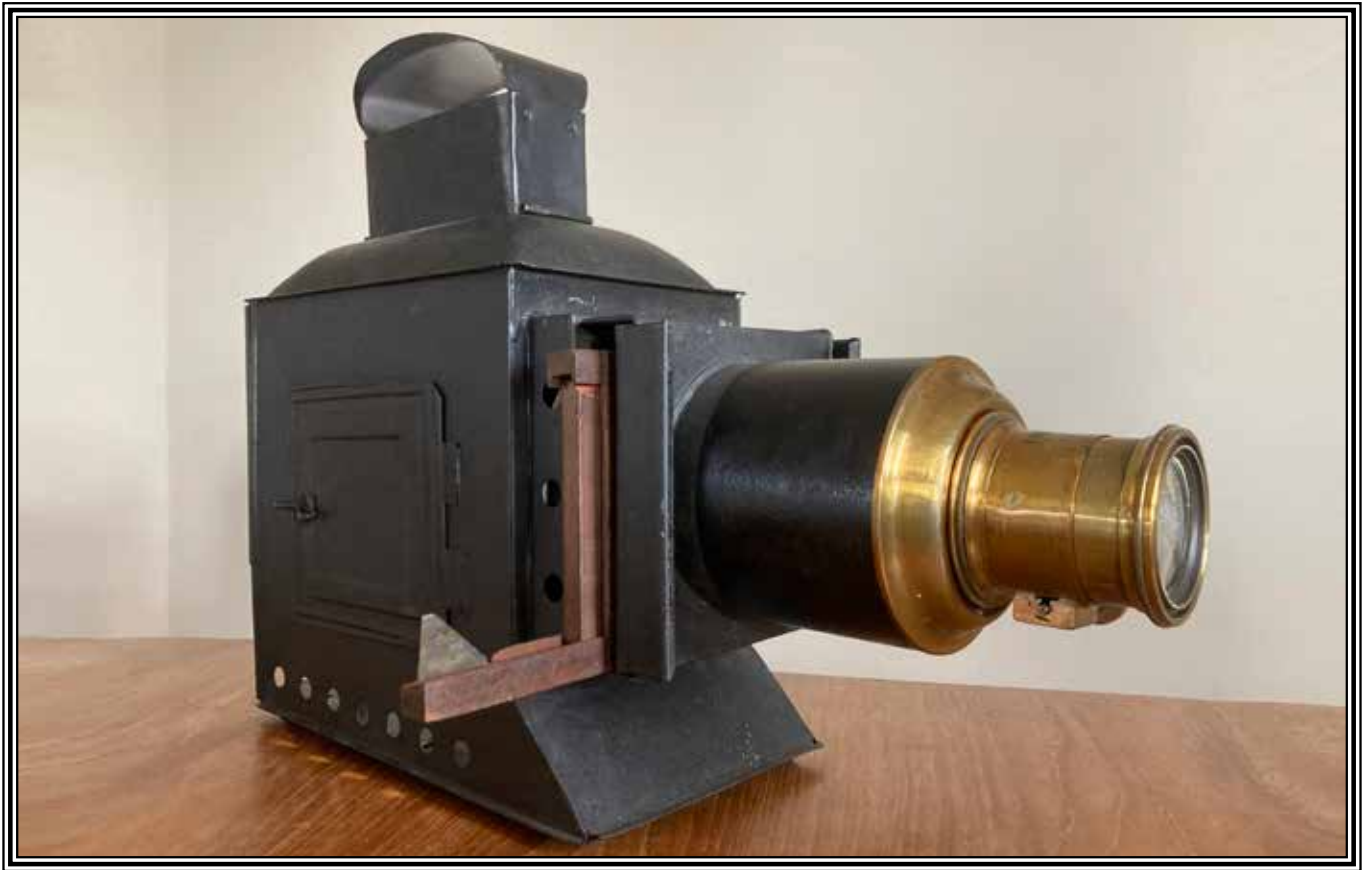
Some Notes on Photographers 3

Glass Magic Lantern Slides 4

Stereoscopic Glass Magic Lantern Slides 33

Stereoscopic Images on Card 37

A Brief History of Magic Lantern Projectors



The Dutch astronomer, mathematician and physicist Christiaan Huygens is credited with inventing the magic lantern in the 1650s when he created projected images using an optical lens and candlelight. By the 18th century it became a popular form of entertainment with show men called lanternists using hand-painted images of classic stories and exotic landscapes to create their theatrical presentations. Some specialised in pictures of supernatural creatures that appeared in magic shows called phantasmagorias. In the 1820s the invention of limelight, a much brighter source of illumination, meant that projections became more dazzling and large enough to fill theatres. Live music and stage technology were used to make the shows ever more dramatic, and there was even projection on smoke for ghostly effects.

Simpler types of lanterns became popular with the introduction of the mineral oil lamp in the second half of the 19th century and trade in lanterns flourished in the 1870s and 80s, alongside the newly accessible art of photography. Magic lantern slides shows were held in small halls, churches and schools and were a popular form of home entertainment among the middle and upper classes.

The popularity of magic lantern shows waned towards the end of the 19th century when a new art called cinematography began to emerge. Movies! As a method of projecting still images though, magic lanterns weren't replaced until the 1950s with the invention of the 35mm slide and new designs of projectors like the Kodak Carousel.

Our magic lantern projector was given to us by Francis Hamon in 2024 along with a large collection of glass lantern slides and stereoscopic images on glass and card from Deryck Hamon. Our projector is of a typical Victorian design. It would originally have been lit by a kerosene oil lamp, hence the little chimney to allow the heat to escape. The light shines through a condenser, a thick glass lens, before passing through the slide and then the image is focused through the lens. Our lens was made by Emil Busch, a highly successful camera and lens maker in Germany. Our lantern had been converted to electricity at some point and in 2025 Andy Cook re-wired it to add an earth wire and replaced the old light bulb with a high-powered LED lamp.

Magic Lantern Slides

Lantern slides are positive transparent photographs made on glass. They were created by sensitizing a sheet of glass with a silver gelatin emulsion. The plate was then exposed to a negative and processed, resulting in a positive transparent image with exceptional detail and a rich tonal range. A second, clear glass plate was then put on top of the slide with a paper border around the edge of the image so that the cover glass didn't touch the image. The two pieces of glass were then bound together with paper tape.

Some photographs had colour added by artists who painted them by hand using either watercolours, oil paint or a combination of the two. Some of these are more skillfully painted than others but our set of 45 hand-painted slides created for Dame Sibyl in 1938 by National Geographic contains some particularly fine examples of this art.



Stereoscopic Images & Viewers

Early stereoscopic images were obtained by moving the camera about 62mm and taking a second view of the same subject from the slightly different position. When seen through a viewing device (a stereoscope) a three dimensional effect is created by these pairs of images. In 1853 Latimer Clark was one of the first to demonstrate a frame which moved the camera the required distance in order to take sequential stereo pairs. In 1854 John A. Spencer demonstrated a double width camera having a moveable lens for taking stereo pairs. The Manchester photographer John Benjamin Dancer was one of the first to make a twin lens stereo camera in 1853, which he patented in 1856 and offered for sale. Most of our stereoscopic images are on card but we have 22 that are made of glass. All but one of these are double versions of the same sized slide as the standard magical lantern slide. The other is much smaller, a still from filming *Toilers of the Sea*.

The first commercially produced stereoscopes were hand-held wooden boxes with lenses and they were manufactured from 1849 by James Brewster. The invention was said to be much admired by Queen Victoria when it was demonstrated at the Great Exhibition of 1851. Ten years later Oliver Wendell Holmes created a simpler, less costly viewer consisting of two prismatic lenses and a wooden frame to hold the stereo card, seen above. We have two of these and they can be used to look at both our card and glass stereoscopic images. The 3D effect is surprisingly effective and a wonderful way to view life on Sark in the 19th and early 20th centuries.

*** Spelling mistakes and inconsistencies within the catalogue of local names eg Derrible/Terrible are where the captions are taken directly from the slide or photograph.**

Some Notes on the Photographers

T. B. Hutton

Thomas Belsham Hutton was born in Warwickshire (estimated) in 1828. He moved to Guernsey in the late 1850s with his wife Ellen Randell who was from Guernsey. They had seven children. They moved to Jersey in 1881. Thomas Hutton is well known for his excellent stereoscopic views, and he also produced *carte de visites* plus small and large albumen prints for placing in a customer's own photo albums. (*Carte de visites* were formal visiting cards featuring a photographic portrait of the owner. They became extremely popular in Victorian times and provided a good income for photographers.) Of all the photographers who produced Guernsey and Sark stereoscopic view cards, Thomas Hutton was the most successful.

Thomas Singleton (1846 - 1915)

Thomas Singleton was born on the Isle of Wight and married Anne Hamilton from Northern Ireland in January 1868. They had six children. Though based on Guernsey, Thomas took photographs on all of the Channel Islands, and was helped with the printing by his wife and in later years by two of his children, Mary and Hamilton. Thomas's main legacy is his series of numbered and attributed landscape photographic views of the islands in the 1890's; this being his money earner due to the increase in tourists coming to the Islands by the new mail boat services. (Thomas re-photographed the same scene more than once and then re-issued the image under the same reference number. He also used some images taken in earlier years for this series.) He also produced portrait and landscape format *carte de visites*, and made landscape stereoscopic views in the 1870's and 80's, though the stereo views can be hard to identify because, except for a few exceptions, he only hand wrote the titles and did not mark his name. A small selection of postcards depicting some of his previous images were also issued in about 1899 with a photograph on the front and a space for the written message. (It was only after 1902, that the British Post Office allowed a personal message to be placed on the back of the card next to the address.)

Millikin and Lawley

Millikin and Lawley was a slide manufacturer and dealer in London, mostly active between the 1860s to the 1900s. The business continued well into the 20th Century, though their main activity then was surgical instrument supply.

S. Barbet

Stephen Barbet was a bookseller, publisher and stationer living on Guernsey who also sold photographs. It is not known who took the images he sold.

Sir William Crookes (1832-1919)

Sir William Crookes was an English chemist and physicist who attended the Royal College of Chemistry and worked on spectroscopy. He was a pioneer of vacuum tubes, inventing the Crookes tube, which was made in 1875, a foundational discovery that eventually changed the whole of chemistry and physics. He discovered the element thallium, and in 1865 he was also the first to describe the spectrum of terrestrial helium. He was the inventor of the Crookes radiometer but did not discern the true explanation of the phenomenon he detected. Crookes also invented a 100% ultraviolet blocking sunglass lens. For a time, he was interested in spiritualism and became president of the Society for Psychical Research. According to the dates on his stereoscopic glass slides he visited Sark in 1903, 1906 and 1907.

W. C. Hughes (1844-1908)

William Charles Hughes traded in optical equipment and magic lanterns from his premises in London from 1879. He was also an inventor and went on to design and produce his own cameras, projectors and accessories. His business survived into the 20th century, by which time he had earned himself an honourable place among the pioneers of the British film industry. The W. C. Hughes magic lantern slides in our collection can be identified by their copper edges.

Glass Magic Lantern Slides x 185



Brecqhou from La Coupée
856A0670.jpg
Donated by Deryck Hamon, 2024



Brecqhou from above Port du Mouin
856A0671.jpg
Donated by Deryck Hamon, 2024



La Seigneurie, Sark
856A0672.jpg
Donated by Deryck Hamon, 2024



La Seigneurie, Sark
856A0673.jpg
Donated by Deryck Hamon, 2024



La Seigneurie, Sark
856A0674.jpg
W. C. Huges, 82 Mortimer Road, London
Donated by Deryck Hamon, 2024



Sark Lane & Seigneurie Gate
856A0675.jpg
Donated by Deryck Hamon, 2024



Entrance to La Seigneurie
856A0676.jpg
H. L. Tom's, Victoria Street, London
Donated by Deryck Hamon, 2024



Seigneurie Gate- Wooden gates were replaced with the current wrought iron gates gifted by the people of Sark to the Dame on her marriage to Robert Hathaway in 1929 856A0678.jpg
Donated by Deryck Hamon, 2024



Archway, Clos du Milieu
856A0679.jpg
Donated by Deryck Hamon, 2024



Seigneurie Gardens 1914
856A0900.jpg
Donated by Sue Daly, 2025



View of rocks at Little Sark (2 copies)
856A0681.jpg & 856A0683.jpg
Donated by Deryck Hamon, 2024



Sark, Creux Blanc et noir, 1906
(Les Fontaines, Little Sark)
856A0682.jpg
Donated by Deryck Hamon, 2024



Venus Bath, Sark
 856A0684.jpg
 H. L. Tom's, Victoria Street, London
Donated by Deryck Hamon, 2024



Ruined Silver Mines, Sark
 856A0685.jpg
Donated by Deryck Hamon, 2024



Le Pot Little Sark
 856A0687.jpg
Donated by Deryck Hamon, 2024



Sark Venus's Bath 1896
 856A0688.jpg
Donated by Deryck Hamon, 2024



Sark, In Pot Bay 1896
 856A0689.jpg
Donated by Deryck Hamon, 2024



Sark SW coast
 856A0690.jpg
Donated by Deryck Hamon, 2024



Port Gorey, Little Sark
856A0903.jpg
Donated by Sue Daly, 2025



Sark coastline, Pot Bay 1896
856A0691.jpg
Donated by Deryck Hamon, 2024



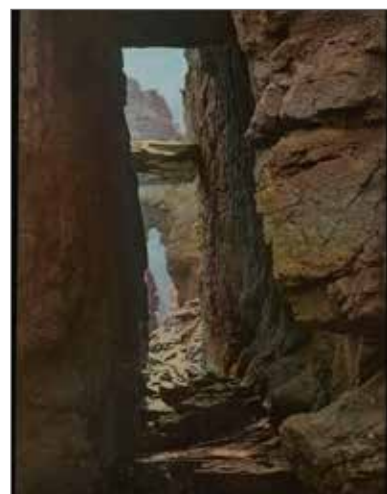
Sark Creux Blanc et Noir 1906
(Little Sark) 856A0692.jpg
Donated by Deryck Hamon, 2024



The Boutiques Cave
856A0693.jpg
H. L. Tom's Victoria Street, London
Donated by Deryck Hamon, 2024



The Boutiques Cave Sark
856A0904.jpg
Donated by Deryck Hamon, 2024



Fairy Grotto, 1914, Sark
856A0902.jpg
Donated by Sue Daly, 2025



Fairy Grotto, Sark
856A0696.jpg
Donated by Deryck Hamon, 2024



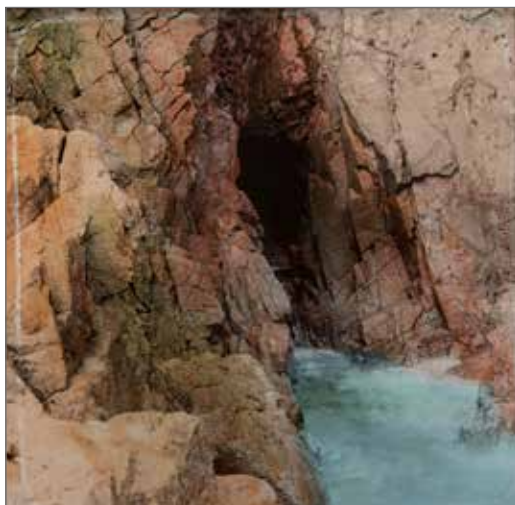
Victor Hugo Cave, Sark
856A0697.jpg
Donated by Deryck Hamon, 2024



Sark, Victor Hugo Cave 1907
856A0908.jpg
Donated by Deryck Hamon, 2024



Victor Hugo's Cave Sark 1919
856A0905.jpg
Donated by Sue Daly, 2025



Unknown cave, Sark
856A0699.jpg
Donated by Deryck Hamon, 2024



Moie de Mouton, Sark
856A0700.jpg
Donated by Deryck Hamon, 2024



Sark, View in Gouliot Cave
856A0701.jpg
Donated by Deryck Hamon, 2024



Gouliot Cave
856A0702.jpg
Donated by Deryck Hamon, 2024



Sark, The Gouliots Inner Cave 1907
856A0703.jpg (Negative)
Donated by Deryck Hamon, 2024



Entrance to Gouliot Caves
856A0704.jpg
Donated by Deryck Hamon, 2024



Grand Autelet from the Window 1902
856A0705.jpg
Donated by Deryck Hamon, 2024



Grand Autelet
856A0706.jpg
W. C. Huges, London
Donated by Deryck Hamon, 2024



Sark, Grand Autelet
856A0707.jpg
Donated by Deryck Hamon, 2024



Les Autelets
856A0708.jpg
W. C. Huges, London
Donated by Deryck Hamon, 2024



Les Autelets
856A0709.jpg
Donated by Deryck Hamon, 2024



Les Autelets, Sark
856A0710.jpg
W. C. Huges, London
Donated by Deryck Hamon, 2024



Sark, Les Autelets & west coast
856A0711.jpg
Donated by DeryckHamon, 2024



The Autelet Rocks, Moonlight
856A0712.jpg
Donated by Deryck Hamon, 2024



Port du Moulin 1914
(Figures are standing by the seaweed hoist)
856A0903.jpg
Donated by Sue Daly, 2025



Sark, Tintagel Rock
(Should be Tintageu)
856A0713.jpg
Donated by Deryck Hamon, 2024



Natural Arch, Sark
Port du Moulin
856A0714.jpg
Donated by Deryck Hamon, 2024



Sark Arched Rock Moie du Moulin
856A0715.jpg
Donated by DeryckHamon, 2024



Arch, Port du Moulin
856A0715.jpg
W.C. Hughes, London
Donated by Deryck Hamon, 2024



Natural Bridge, Sark
Port du Moulin
856A0718.jpg
Donated by Deryck Hamon, 2024



Arch in Port du Moulin 1896
856A0720.jpg
Donated by Deryck Hamon, 2024



Sark Creux Derrible
856A0722.jpg
Donated by Deryck Hamon, 2024



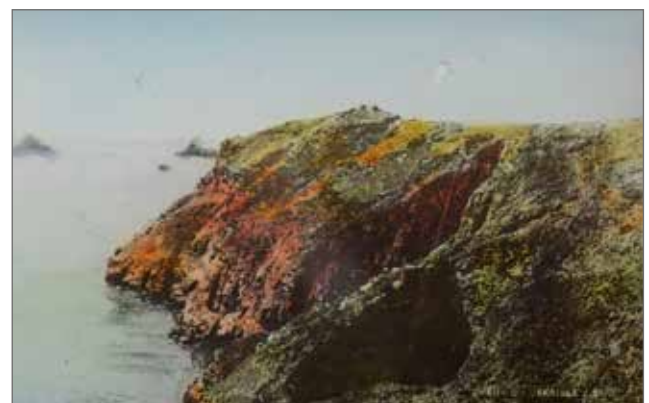
Sark Creux Derrible
856A0723.jpg
Donated by Deryck Hamon, 2024



The Creux Terrible, Sark
856A0724.jpg
Donated by Deryck Hamon, 2024



Creux Derrible distant view
856A0726.jpg
Donated by Deryck Hamon, 2024



Creux Derrible Hogs Back
856A0728.jpg
Donated by Deryck Hamon, 2024



Creux Derrible Bay
856A0729.jpg
Donated by Deryck Hamon, 2024



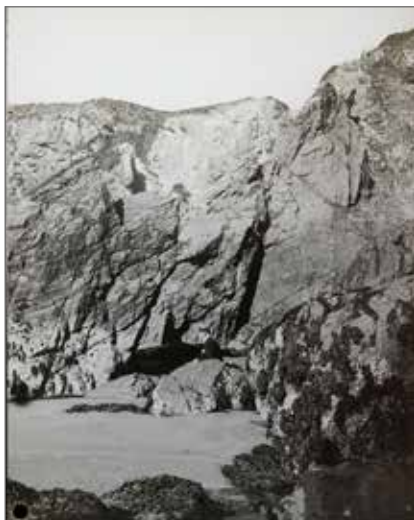
Top Creux Terrible, Sark
856A0731.jpg
Donated by Deryck Hamon, 2024



Derrible Bay
856A0733.jpg
Donated by Deryck Hamon, 2024



Sunset from La Coupée
856A0734.jpg
Donated by Deryck Hamon, 2024



Grande Grève Sark 1896
856A0735.jpg
Donated by Deryck Hamon, 2024



Sark, La Grande Grève
856A0736.jpg
Donated by Deryck Hamon, 2024



Gulls Chapel Sark
856A0737.jpg
Donated by Deryck Hamon, 2024



Rocks at Eperquerie
856A0738.jpg
Donated by Deryck Hamon, 2024



Cliffs near La Coupée, Sark
856A0739.jpg
Donated by Deryck Hamon, 2024



Arch at Dixcart
856A0741.jpg
Donated by Deryck Hamon, 2024



Arch at Dixcart
856A0742.jpg
W. C. Hughes, London
Donated by Deryck Hamon, 2024



Arch at Dixcart, stormy day
856A0743.jpg
Donated by Deryck Hamon, 2024



Dixcart Bay
856A0745.jpg
Donated by Deryck Hamon, 2024



Dixcart Bay
856A0746.jpg
Donated by Deryck Hamon, 2024



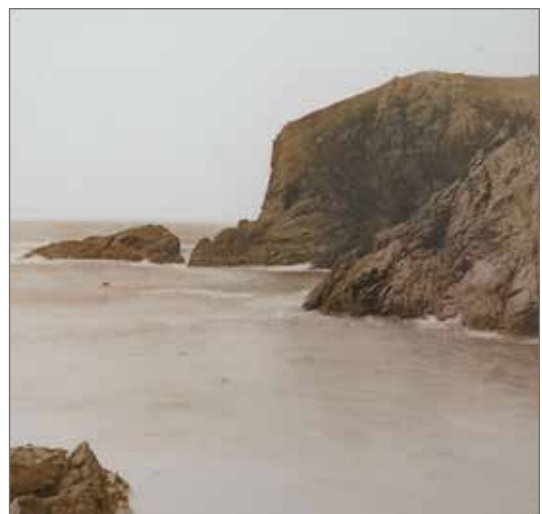
Natural Arch at Dixcart
856A0747.jpg
Donated by Deryck Hamon, 2024



Arched rock, Dixcart Bay, Sark
856A0748.jpg
Donated by Deryck Hamon, 2024



Dixcart Bay, Sark
856A0753.jpg
Donated by Deryck Hamon, 2024



Dixcart Bay, Sark
856A0754.jpg
Donated by Deryck Hamon, 2024



Arched rock, Dixcart Bay, Sark
856A0755.jpg
Donated by Deryck Hamon, 2024



Dixcart Bay, Sark
856A0756.jpg
Donated by Deryck Hamon, 2024



Dixcart Bay, Sark
856A0756.jpg
Donated by Deryck Hamon, 2024



View in Dixcart Wood
856A0760.jpg
Donated by Deryck Hamon, 2024



Sark, Dixcart
856A6002.jpg



The Tunnel, Creux Harbour
856A0762.jpg
Donated by Deryck Hamon, 2024



Tunnel, Creux Harbour
856A0763.jpg
(New tunnel looking up to lime kiln)
Donated by Deryck Hamon, 2024



Creux Harbour, Sark
856A0764.jpg
Donated by Deryck Hamon, 2024



Creux Harbour, Sark (Ship SS Alert)
856A0765.jpg
Donated by Deryck Hamon, 2024



SS Alert in Creux Harbour, Sark
856A0766.jpg
Donated by Deryck Hamon, 2024



Sark, The Harbour
SS Courier II 856A0768.jpg
Donated by Deryck Hamon, 2024



Creux Harbour, Sark
856A0769.jpg
Donated by Deryck Hamon, 2024



Creux Harbour, Sark (Harbour was completed c 1870, bridge filled in, sally port & second pierhead added in 1893. 4 copies)
856A0771.jpg (& 72, 74, 75)
Donated by Deryck Hamon, 2024



Paddlesteamer *Rescue II* anchored off Creux Harbour. Built 1878 to replace vessel of the same name. Operated to Sark from 1878 to 1895. (Bridge filled in 1893)
856A0949.jpg
Donated by Deryck Hamon, 2024



Road to the Harbour, Sark (2 copies)
New Tunnel 856A0776.jpg & 77
Donated by Deryck Hamon, 2024



Harbour, Sark. Ship is *SS Alert*, renamed *Serk* in 1910, built in 1885 for the Guernsey Steam Towing & Trading Co Ltd. Operated until end of the 1913 season. 856A0780.jpg
Donated by Deryck Hamon, 2024



Creux Harbour, Sark
856A0782.jpg
Donated by Deryck Hamon, 2024



The entrance to Sark, Sept 1923
856A0783.jpg
Donated by Deryck Hamon, 2024



Party on boat going to Sark, Sept 1923
856A0784.jpg
Donated by Deryck Hamon, 2024



Arrival in Guernsey, scene on landing
Ship is SS *Diana* London & South Western Rail-
way Co. 856A0889.jpg
Donated by Deryck Hamon, 2024



Sark Ahead
Ship *Vera* 1898-1933 London & South Western
Railway Co, picked up *Stella* survivors in 1899.
856A0782.jpg
Donated by Deryck Hamon, 2024



Ship is SS *Alert*, renamed *Serk* in 1910, built in
1885 for the Guernsey Steam Towing &
Trading Co Ltd. Operated until end of
the 1913 season. 856A0893.jpg
Donated by Sue Daly, 2025



Creux Harbour
Ship is SS *Alert*, renamed *Serk* in 1910
856A0895.jpg
Donated by Sue Daly, 2025



Creux Harbour. Ship is SS *Riduna*, built 1904,
operated by the Alderney Steam Packet Co from
April 1927 to March 1931.
856A6007.jpg



Entrance to Sark
856A6006.jpg



Ship in Creux Harbour
Joybell II operated from May 1931 by Sark
Motor Ships, lost Feb 1933 when broke from
mooring on Sark. 856A6005.jpg



Fishermen's corner, Sark
Corner by old graveyard?
856A0790.jpg
Donated by Deryck Hamon, 2024



Herm
856A0792.jpg
Donated by Deryck Hamon, 2024



Alderney
856A0793.jpg
Donated by Deryck Hamon, 2024



Sark
856A0795.jpg
Donated by Deryck Hamon, 2024



Sark, Cow
856A0796.jpg
Donated by Deryck Hamon, 2024



Milking Time
From same series as dated 1919
856A0792.jpg
Donated by Sue Daly, 2025



Sark (Beauregard Pond) 1914
856A0896.jpg
Donated by Sue Daly, 2025



A Sarkesian Native
(On Eperquerie?)
856A0899.jpg
Donated by Sue Daly, 2025



Milking time, Sark 1919
856A0904.jpg
Donated by Sue Daly, 2025



Sark, Havre Gosselin
856A0797.jpg & 798
Donated by Deryck Hamon, 2024



Sark Justice
856A0791.jpg
Donated by Deryck Hamon, 2024



Gouliot Rocks and Caves (2 copies)
856A0799.jpg & 800
Donated by Deryck Hamon, 202



Sark, Brecqhou & Moie de Gouliot
856A0802.jpg
Donated by Deryck Hamon, 2024



Havre Gosselin & Little Sark
856A0804.jpg
Donated by Deryck Hamon, 2024



Sark, Gouliot Caves
856A0806.jpg
Donated by Deryck Hamon, 2024



Sark, Gouliot Rocks
Havre Gosselin 856A0807.jpg
Donated by Deryck Hamon, 2024



Havre Gosselin Sark, 1914
856A0901.jpg
Donated by Sue Daly, 2025



Gouliot Passage from Brecqhou 1899
856A0808.jpg
Donated by Deryck Hamon, 2024



Gouliot Bay & Caves, Sark
Havre Gosselin
856A0810.jpg
Donated by Deryck Hamon, 2024



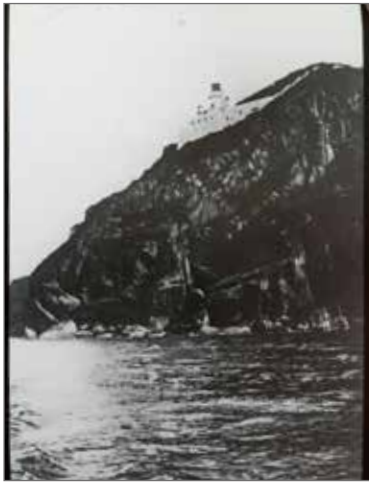
The Gouliot Rock, Sark (2 copies)
856A0811.jpg & 812
Donated by Deryck Hamon, 2024



Banquette (Le Fort outbuildings)
856A0813.jpg
Donated by Deryck Hamon, 2024



Sark Church, St Peter's
856A0814.jpg
Donated by Deryck Hamon, 2024



Lighthouse, Cape Robert
 856A0815.jpg
 H.L. Tom's, London
Donated by Deryck Hamon, 2024



Sark Lighthouse 1914
 856A0898.jpg
Donated by Sue Daly



Vicarage, Sark (Le Manoir)
 856A0816.jpg
Donated by Deryck Hamon, 2024



Manoir cottages
 856A0818.jpg
Donated by Deryck Hamon, 2024



Sark Cottages (Manoir 2 x copies)
 856A0819.jpg & 820
 H.L. Tom's, London
Donated by Deryck Hamon, 2024



Belleview Hotel, Sark (Bel Air)
 Accidentally burnt down by the Germans in
 January 1942 856A0821.jpg
Donated by Deryck Hamon, 2024



Le Port
856A0822.jpg
Donated by Deryck Hamon, 2024



Rose Cottage - is this on Sark?
856A0823.jpg
Donated by Deryck Hamon, 2024



Boys' School, built 1829
856A0825.jpg
Donated by Deryck Hamon, 2024



Peigneurie Farm
856A0826.jpg
Donated by Deryck Hamon, 2024



Tardiff's Cottage, Frégondée
856A0828.jpg
Donated by Deryck Hamon, 2024



The windmill Sark
Some time after 1919 856A0829.jpg
H. L. Tom's, London
Donated by Deryck Hamon, 2024



Windmill, built 1571
856A0831.jpg
Donated by Deryck Hamon, 2024



Prison (Built 1856, probably designed
by Seigneur WT Collings)
856A6004.jpg



Midland Bank
(On Rue Lucas)
856A6000.jpg



Post Office
Rue Lucas, was here 1870 to 1945
856A6004.jpg



Post Office, Sark
856A0875.jpg
Donated by Deryck Hamon, 2024



Sark Post Office
856A0788.jpg
Donated by Deryck Hamon, 2024



Sunlight and shade, Dixcart, Sark
856A0832.jpg
Donated by Deryck Hamon, 2024



Le Port Lane, Sark
856A0834.jpg
Donated by Deryck Hamon, 2024



Top of Creux Lane, Sark (Harbour Hill)
856A0835.jpg
Donated by Deryck Hamon, 2024



The Meadow of flower near Petit Dicart
856A0737.jpg
H. W. Rhodes, Ilkley, 1920
Donated by Deryck Hamon, 2024



Creux Land, Sark (Harbour Hill)
856A0839.jpg
Donated by Deryck Hamon, 2024



La Coupée, Sark (2 copies)
856A0840.jpg & 841
Donated by Deryck Hamon, 2024



Sark, The Coupée
856A0842.jpg
E. G. Wood, London
Donated by Deryck Hamon, 2024



La Coupée, Sark
856A0843.jpg
Donated by Deryck Hamon, 2024



La Coupée, Sark
856A0845.jpg
Donated by Deryck Hamon, 2024



Sark, La Coupée
856A0848.jpg
Donated by Deryck Hamon, 2024



La Coupée, east side
856A0850.jpg
Donated by Deryck Hamon, 2024



La Coupée, Sark
Post 1900 when railings added 856A0852.jpg
Donated by Deryck Hamon, 2024



La Coupée, Sark
856A0853.jpg
Donated by Deryck Hamon, 2024



La Coupée, Sark
856A0855.jpg
Donated by Deryck Hamon, 2024



La Coupée, Sark
856A0856.jpg
Donated by Deryck Hamon, 2024



La Coupée, Sark
856A0859.jpg
Donated by Deryck Hamon, 2024



View on the road near Coupée, Sark
856A0860.jpg
Donated by Deryck Hamon, 2024



La Coupée, Sark
856A0861.jpg
Donated by Deryck Hamon, 2024



Sark, The Coupée, looking towards main island
856A0863.jpg
Donated by Deryck Hamon, 2024



Sark, The Coupée, looking towards small island
856A0864.jpg
Donated by Deryck Hamon, 2024



La Coupée, Sark
856A0866.jpg
Donated by Deryck Hamon, 2024



La Coupée, Sark (3 copies)
856A0867.jpg 868 & 871
Donated by Deryck Hamon, 2024



La Coupée, Sark
856A0872.jpg
Donated by Deryck Hamon, 2024



La Tour Well
856A0874.jpg
Donated by Deryck Hamon, 2024



Peigneurie well
856A0875.jpg
Donated by Deryck Hamon, 2024



Peigneurie well
856A0876.jpg
Donated by Deryck Hamon, 2024



Petit Beauregard well
856A0878.jpg
Donated by Deryck Hamon, 2024



Cider press
856A0879.jpg
Donated by Deryck Hamon, 2024



Cannon (on L'Eperquerie?)
856A0880.jpg
H. W. Rhodes, Ilkley, 1920
Donated by Deryck Hamon, 2024



Map of Sark
856A0881.jpg
Donated by Deryck Hamon, 2024



Map of Sark
856A0883.jpg

Donated by Deryck Hamon, 2024



Map of the Channel Islands
856A0884.jpg

Donated by Deryck Hamon, 2024



Map of Sark
856A0885.jpg

Donated by Deryck Hamon, 2024



Map of Sark
856A0888.jpg

Donated by Deryck Hamon, 2024



L'Ecluse
856A0957.jpg

Donated by Deryck Hamon, 2024



Carriage on quay in Creux Harbour
856A5998.jpg



Vinehouse, location unknown
856A5997.jpg

Stereoscopic Glass Magic Lantern Slides x 22



La Seigneurie, Sark 3-9-03
856A0915.jpg
Sir William Crookes, F.R.S
Donated by Deryck Hamon, 2024



Sark , Arch in Port du Mouin F/16 1/16
856A0916.jpg
Donated by Deryck Hamon, 2024



Sark, The Mill F/11 1/8"
856A0917.jpg
Donated by Deryck Hamon, 2024



Stocks Hotel, Sark 25-8-06
856A0919.jpg
Sir William Crookes, F.R.S
Donated by Deryck Hamon, 2024



Sark Gouliot Passage from Brecqhou 856A0920.
jpg F/22 1/32"
Donated by Deryck Hamon, 2024



The Autelets, Sark 1-9-03
856A0921.jpg
Sir William Crookes, F.R.S
Donated by Deryck Hamon, 2024



Tardiff's Cottage, Frégondée 12-9-03
856A0922.jpg
Donated by Deryck Hamon, 2024



Sark, Venus's Bath F/16 6"
856A0924.jpg
Donated by Deryck Hamon, 2024



Sark, The Fairy Grotto F/11 5"
856A0926.jpg
Donated by Deryck Hamon, 2024



Sark, Moie de Orgeries F/22 3'
856A0928.jpg
Donated by Deryck Hamon, 2024



Sark Arch in Dixcart Bay F/16 64
856A0930.jpg
Donated by Deryck Hamon, 2024



Well at Dixcart, Sark 7-9-03
856A0931.jpg
Sir William Crookes, F.R.S
Donated by Deryck Hamon, 2024

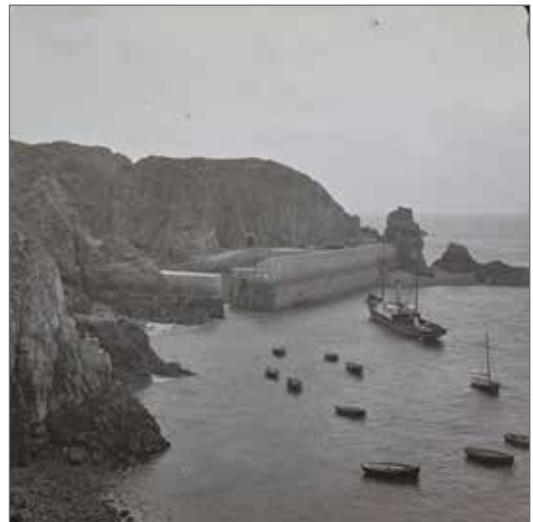


The Battery, Seigneurie Sark 3-9-03

856A0932.jpg

Sir William Crookes, F.R.S (Photographer
bearded man to left? centre WF Collings?)

Donated by Deryck Hamon, 2024



Sark, Creux Harbour F6.3 1/64

856A0934.jpg (Ship is *Courier II*)

Donated by Deryck Hamon, 2024



Sark, The Coupée F/22 1/16"

(Post 1900 when the railings intalled)

856A0936.jpg

Donated by Deryck Hamon, 2024



Coupée from Little Sark 17-9-07

856A0937.jpg

Sir William Crookes, F.R.S

Donated by Deryck Hamon, 2024



Sark, La Coupée F/11 1/16"

(Pre 1900 when the railings were intalled)

856A0939.jpg

Donated by Deryck Hamon, 2024



Sark, Convanche Chasm F/6.3 1/100"

856A0940.jpg

Donated by Deryck Hamon, 2024



Sark, Creux Harbour F/6.3 1/16”
(Ship is *Alert* renamed *Serk* in 1910)
856A0942.jpg
Donated by Deryck Hamon, 2024



In the Seigneurie Gardens, Sark 3-9-03
856A0943.jpg
Sir William Crookes, F.R.S
Donated by Deryck Hamon, 2024



Sark, Petit Dixcart F/16 1/6”
856A0944.jpg
Donated by Deryck Hamon, 2024



Sark 1936
Fishermen in the film ‘Toilers of the Sea’
856A9721.jpg (Smaller format slide)
Donated by Deryck Hamon, 2024

Stereoscopic Images on Card x 61



View of Sark, La Coupée (pre 1900)
856A0962.jpg
Photographed by Thos. Singleton
Donated by D Synnott or J & S Hepburn



The "Creux du Deribble" (Or Creux Terrible)
Photographed by T. B. Hutton, Guernsey
856A0965.jpg (2 copies)
Donated by D Synnott or J & S Hepburn



Views of Sark, The Creux Terrible
856A0968.jpg
Photographed by Thomas Singleton
Donated by D Synnott or J & S Hepburn



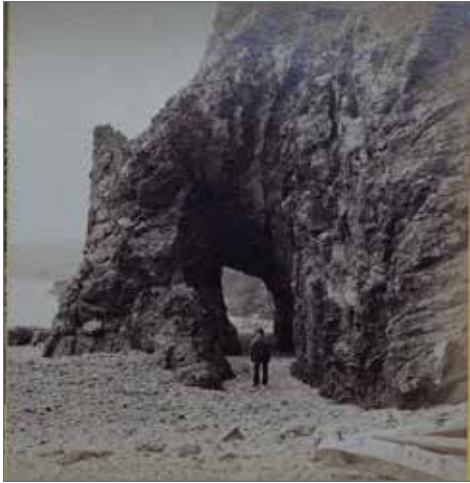
La Coupée Sark, with man on horseback
856A0970.jpg
Donated by D Synnott or J & S Hepburn



Views of Sark, The Coupée (pre 1900)
856A0971.jpg
Photographed by Thos. Singleton
Donated by D Synnott or J & S Hepburn



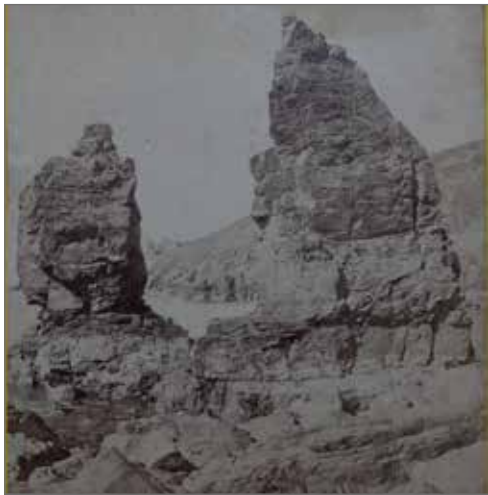
The Manor House Gateway, Sark
856A0972.jpg
Donated by D Synnott or J & S Hepburn



Natural Arch in D'Ixcart Bay, Sark
Photographed by T. B. Hutton, Guernsey
856A0973.jpg
Donated by D Synnott or J & S Hepburn



Les Autelets Rocks, Sark, Group No1
August 2st 1861
F. L. M. Photograph 856A0974.jpg
Donated by D Synnott or J & S Hepburn



The Autelet Rocks, Sark
856A0975.jpg
Photographed by T. B. Hutton, Guernsey
Donated by D Synnott or J & S Hepburn



Arch - Left side of Port du Moulin, Sark
L. E. C. Nov 1860. (Louisa Eizabeth Collings
(1818-1887) was the wife of W. F. Collings,
Seigneur) 856A0976.jpg
Donated by D Synnott or J & S Hepburn



Arch on the right side of Port du Moulin, Sark
L. E. C. Sark 1860 (Louisa Eizabeth Collings
(1818-1887) was the wife of W. T. Collings, Sei-
gneur) 856A0977.jpg
Donated by D Synnott or J & S Hepburn



Natural Arch, Port du Moulin, Sark
856A0978.jpg
Photographed by T. B. Hutton, Guernsey
Donated by D Synnott or J & S Hepburn



The Great Gouliot Cave, Sark
856A0979.jpg

Photographed by T. B. Hutton, Guernsey
Donated by D Synnott or J & S Hepburn



Views of Sark, The Gouliot Caves
856A0980.jpg

Photographed by Thos. Singleton
Donated by D Synnott or J & S Hepburn



Transverse opening of the Great Gouliot Cave,
looking west. Serk, Nov 14 1860, L. E. C.
(Louisa Eizabeth Collings (1818-1887) was the
wife of W. T. Collings, Seigneur) 856A0982.jpg
Donated by D Synnott or J & S Hepburn



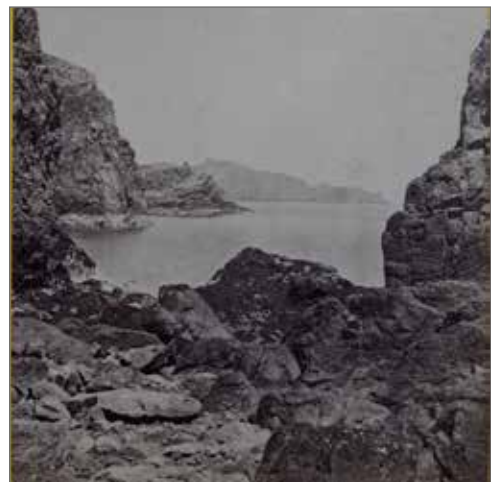
Views of Sark, The Creux Terrible
856A0983.jpg

Photographed by Thos. Singleton
Donated by D Synnott or J & S Hepburn



Rocks near the Pot, Little Sark
856A0984.jpg

Photographed by T. B. Hutton, Guernsey
Donated by D Synnott or J & S Hepburn



Views of Sark, The Pot, Little Sark
856A0985.jpg

Photographed by Thos. Singleton
Donated by D Synnott or J & S Hepburn



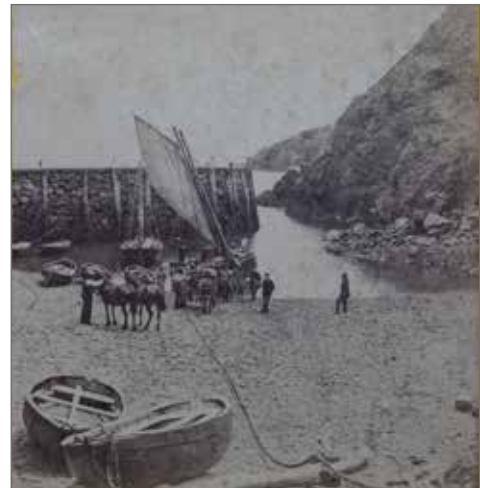
The Island of Brecqhou, From the Gouliot
Rocks, Sark 856A0986.jpg
Photographed by T. B. Hutton, Guernsey
Donated by D Synnott or J & S Hepburn



The Pot, Little Sark
856A0987.jpg
Photographed by T. B. Hutton, Guernsey
Donated by D Synnott or J & S Hepburn



Fountain in D'Ixcart Valley, Sark
856A0989.jpg
Photographed by T. B. Hutton, Guernsey
Donated by D Synnott or J & S Hepburn



The Creux, Harbour, Sark
(This wall destroyed by storms winter 1865/6)
856A0990.jpg
Donated by D Synnott or J & S Hepburn



Views of Sark, The Creux Harbour
856A0991.jpg
Photographed by Thos. Singleton
Donated by D Synnott or J & S Hepburn



Le Creux, Sark 856A0992.jpg
Photographed by S. Barbet, 25 High Street,
St Peter Port, Guernsey
Donated by D Synnott or J & S Hepburn

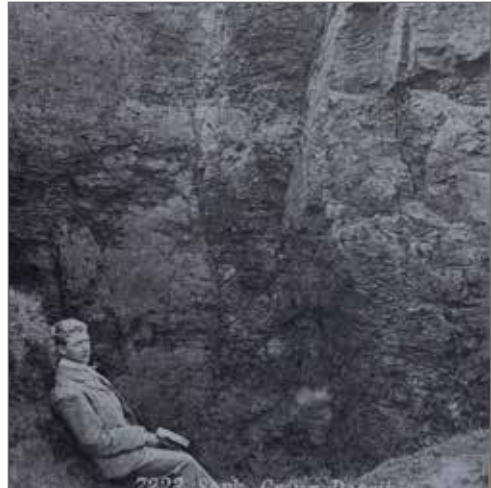


Creux Harbour, Sark

856A0993.jpg

Photographed by T. B. Hutton, Guernsey

Donated by D Synnott or J & S Hepburn



Sark Creux Deribble

856A0955.jpg

Millikin and Lawley, 165 Strand, London

Donated by Deryck Hamon, 2024



The Creux du Derrible (Or Creux Terrible), Sark

856A0996.jpg

Photographed by T. B. Hutton, Guernsey

Donated by Deryck Hamon, 2024



Sercq - La Baie de de dix-cart 1907

856A0997.jpg

Donated by Deryck Hamon, 2024



Rocks near the Pot, Little Sark

856A0998.jpg

Photographed by T. B. Hutton, Guernsey

Donated by Deryck Hamon, 2024



Natural Arch in D'Ixcart Bay, Sark

856A0999.jpg

Photographed by T. B. Hutton, Guernsey

Donated by Deryck Hamon, 2024



Natural Arch, Port du Moulin, Sark
856A1000.jpg
Photographed by T. B. Hutton, Guernsey
Donated by Deryck Hamon, 2024



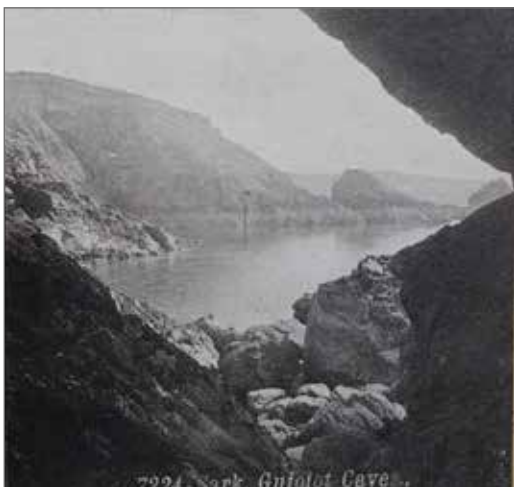
The Autelet Rocks, Sark
856A1001.jpg
Photographed by T. B. Hutton, Guernsey
Donated by Deryck Hamon, 2024



Study of Rocks, Sark
856A1003.jpg
W. I. Lancaster
Donated by Deryck Hamon, 2024



Ile de Sercq. La Baie d'Ixcart, la pointe du
Château, la Baie de la ponte Derrible vues du
Petit-Serck. 18 août 1895
856A1005.jpg
Donated by Deryck Hamon, 2024



The Gouliot Caves, view looking out across
Havre Gosselin
856A1006.jpg
Donated by Deryck Hamon, 2024



The Great Gouliot Cave, Sark
856A1007.jpg
Photographed by T. B. Hutton, Guernsey
Donated by Deryck Hamon, 2024



Gouliot (Inner Cave)
856A1008.jpg
Aspley & Green, Photographers, Jersey
Donated by Deryck Hamon, 2024



Fountain in D'Ixcart Valley, Sark
856A1009.jpg
Photographed by T. B. Hutton, Guernsey
Donated by Deryck Hamon, 2024



Sercq - La Frégonnée ferme 1907
856A1010.jpg
Donated by Deryck Hamon, 2024



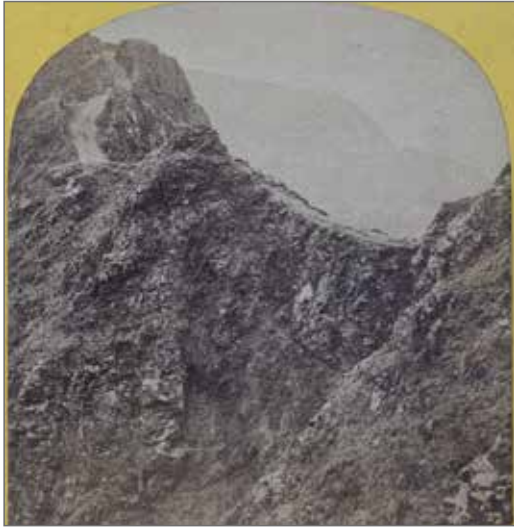
La Segneurie, Sark, Channel Islands
856A1011.jpg
Donated by Deryck Hamon, 2024



The Lower Pond, Seigneurie, Sark
856A1012.jpg
Photographed by T. B. Hutton, Guernsey
Donated by Deryck Hamon, 2024



The Coupée, Sark
856A1013.jpg
Photographed by T. B. Hutton, Guernsey
Donated by Deryck Hamon, 2024



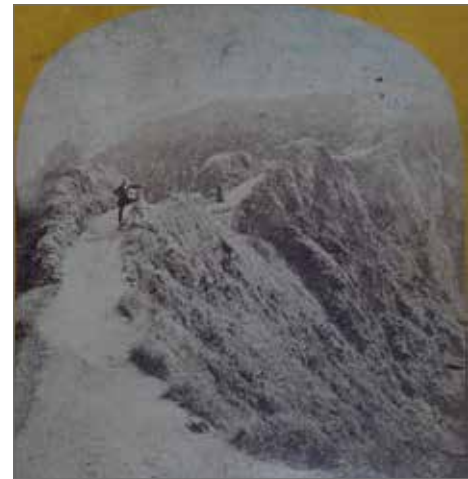
Coupée, Sark, GD Bird 1862
856A1014.jpg
Donated by Deryck Hamon, 2024



The Coupée, Sark 856A1015.jpg
Photographed by S. Barbet, Guernsey
Donated by Deryck Hamon, 2024



Ile de Serck - Isthmus de la Coupée vue de la
mer. Lundi 19 août 1895
856A1016.jpg
Donated by Deryck Hamon, 2024



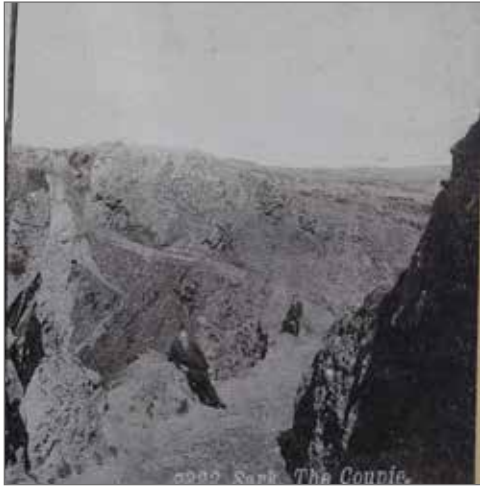
Coupée, Sark (Pre-1900)
856A1017.jpg
Photographed by T. B. Hutton, Guernsey
Donated by Deryck Hamon, 2024



Sercq, La Coupée 1907
856A1018.jpg
Donated by Deryck Hamon, 2024



Sercq, La Coupée 1907
856A1019.jpg
Donated by Deryck Hamon, 2024



Sark The Coupie
856A1020.jpg

Millikin and Lawley, 165, Strand, London
Donated by Deryck Hamon, 2024



The Coupée, Sark
856A1021.jpg

Photographed by T. B. Hutton, Guernsey
Donated by Deryck Hamon, 2024



Coupée, Sark
856A1022.jpg

Donated by Deryck Hamon, 2024



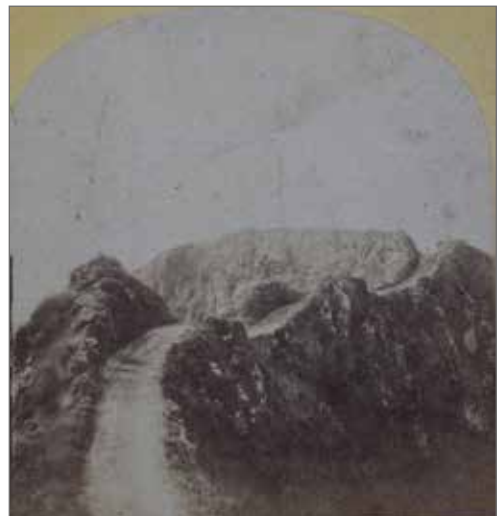
The Coupée, Sark
856A1023.jpg

Donated by Deryck Hamon, 2024



Coupée, Sark
856A1024.jpg

Donated by Deryck Hamon, 2024

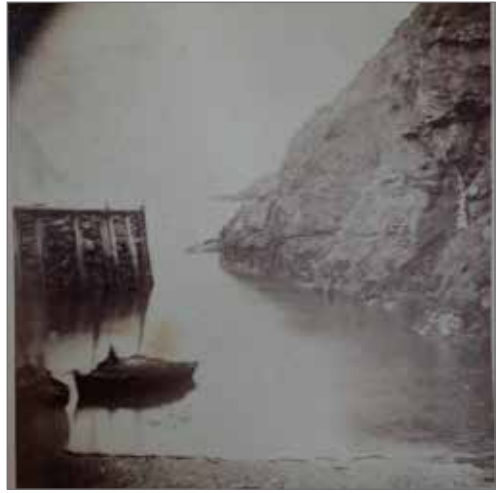


Coupée, Sark
856A1025.jpg

Donated by Deryck Hamon, 2024



The entrance to Creux, Harbour, Sark
856A1027.jpg
Donated by Deryck Hamon, 2024



The Creux, Harbour, Sark
(This wall destroyed by storms winter 1865/6)
856A1029.jpg
Donated by Deryck Hamon, 2024



The Creux, Harbour, Sark (2 copies)
856A1030.jpg & 032
Photographed by T. B. Hutton, Guernsey
Donated by Deryck Hamon, 2024



The Creux, Harbour, Sark
(This wall destroyed by storms winter 1865/6)
856A1034.jpg
Donated by Deryck Hamon, 2024



The Creux, Harbour, Sark
(Capstans can be seen at the top of the beach)
856A1037.jpg
Photographed by T. B. Hutton, Guernsey
Donated by Deryck Hamon, 2024

Photographed & Catalogued
by Sue Daly, January 2025