



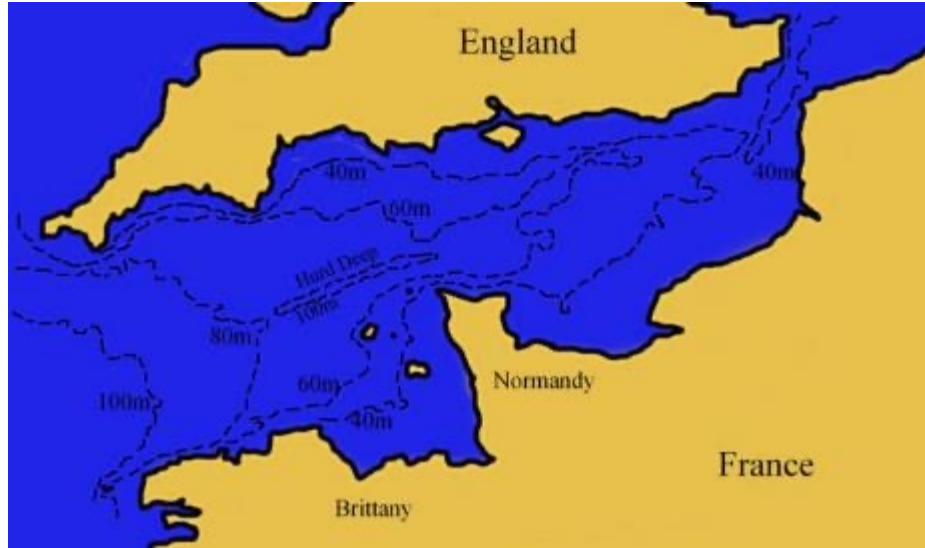
Black bream nesting  
assessment in a  
tidal environment.

Sam Blampied

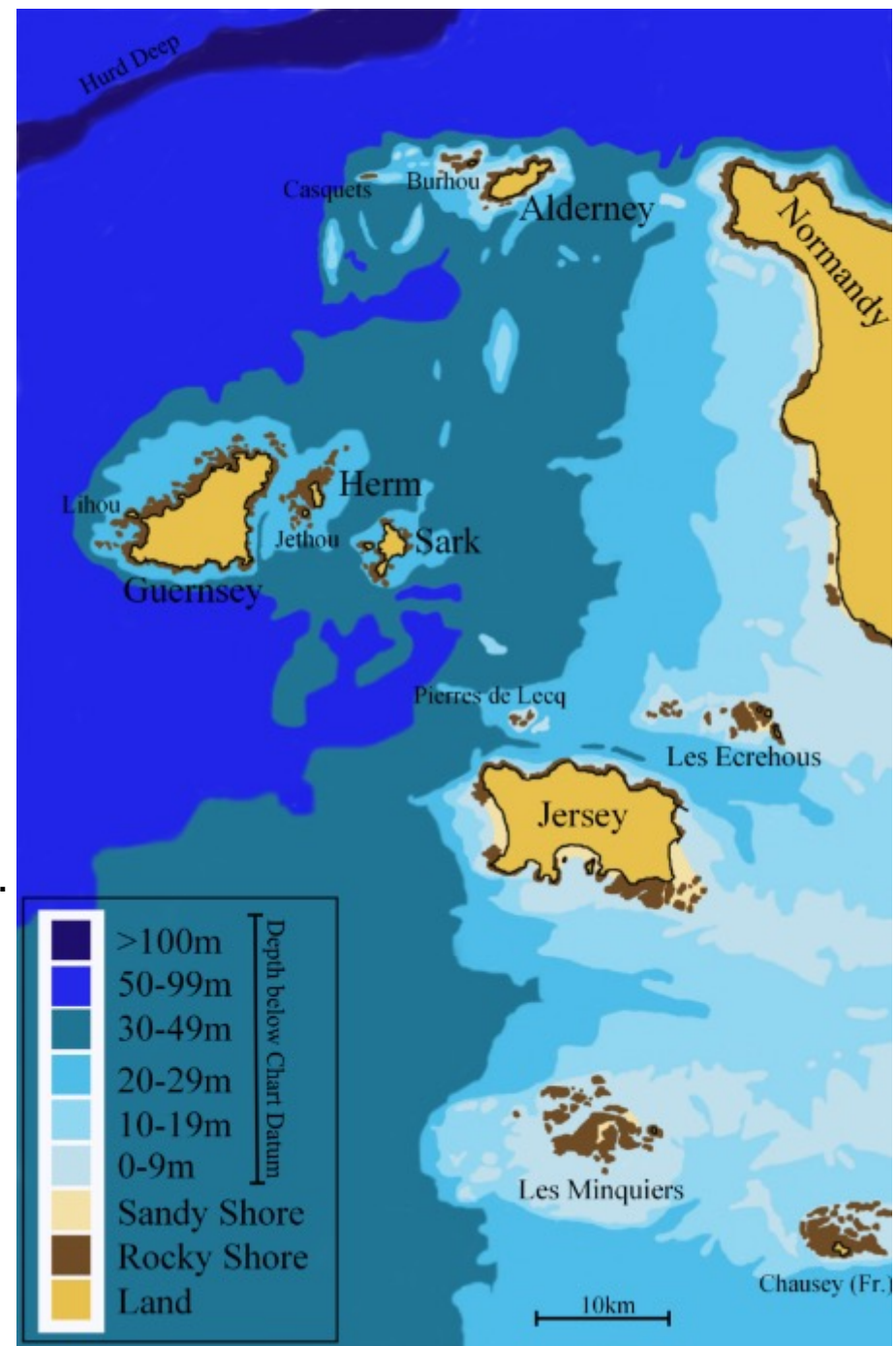
Marine Resources Jersey



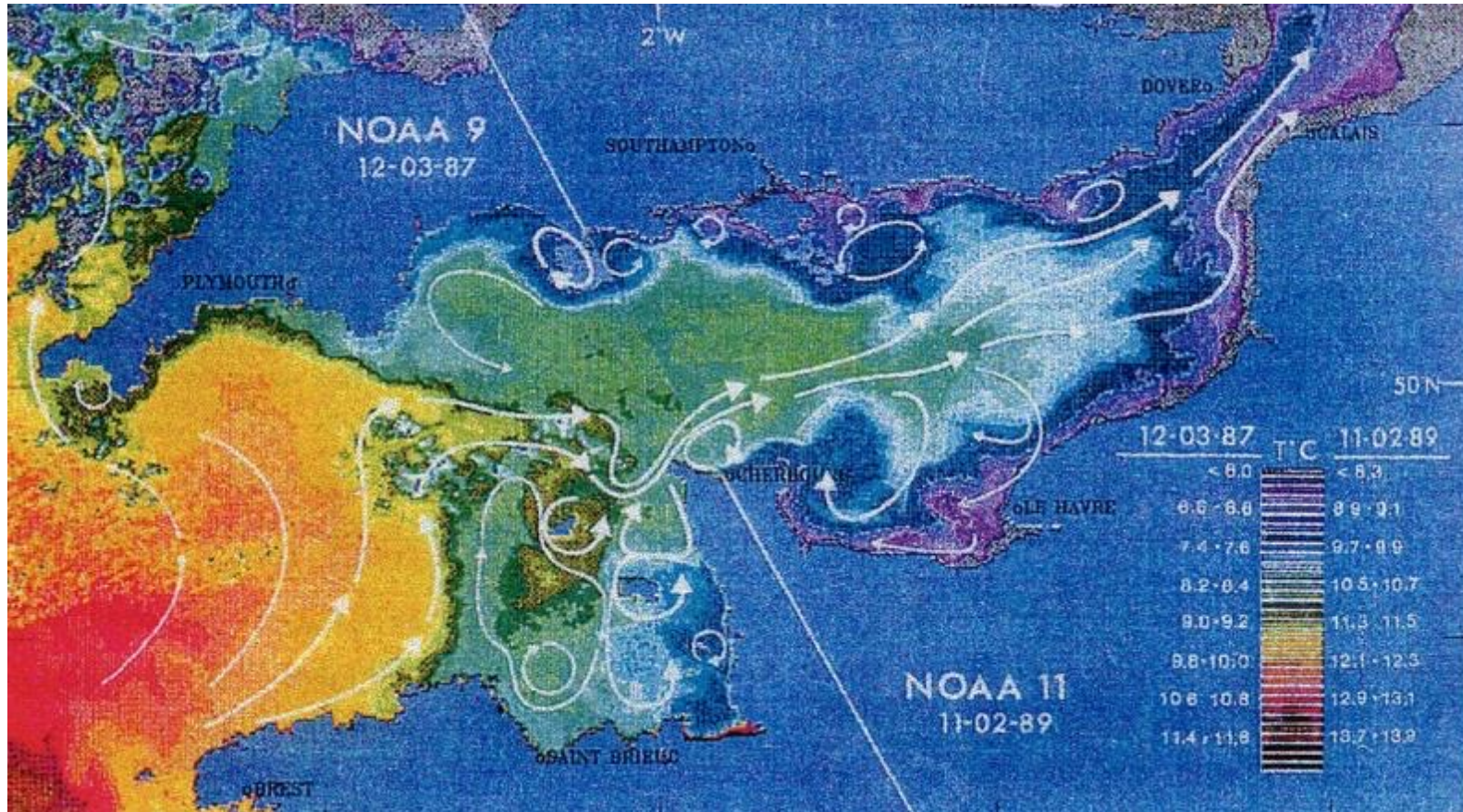
# Welcome to Jersey!



- Jersey is a British Crown Dependency.
- We are situated in the Normano-Breton Gulf.
- We have four offshore reefs.
- Surrounded by shallow sea (<50m deep).
- Became an island 8,000 years ago.



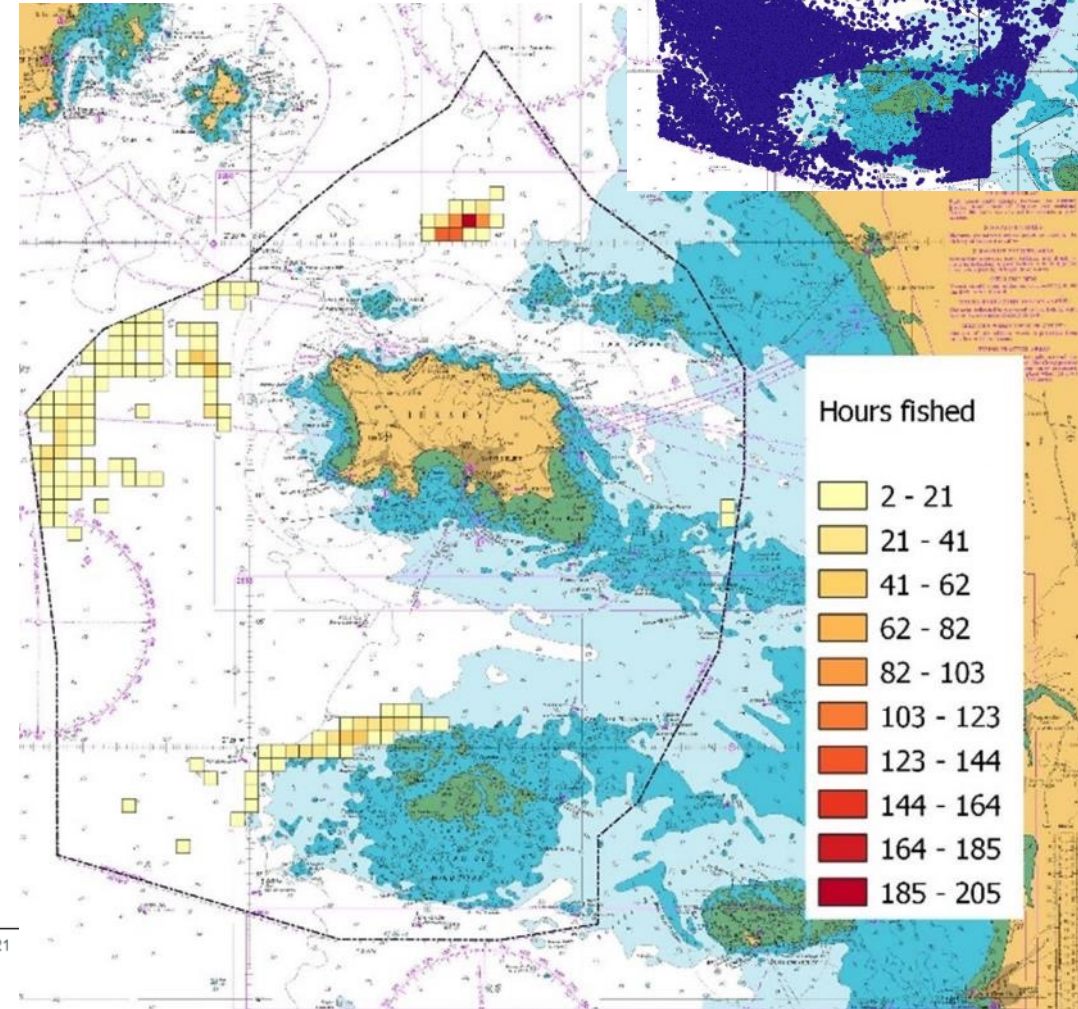
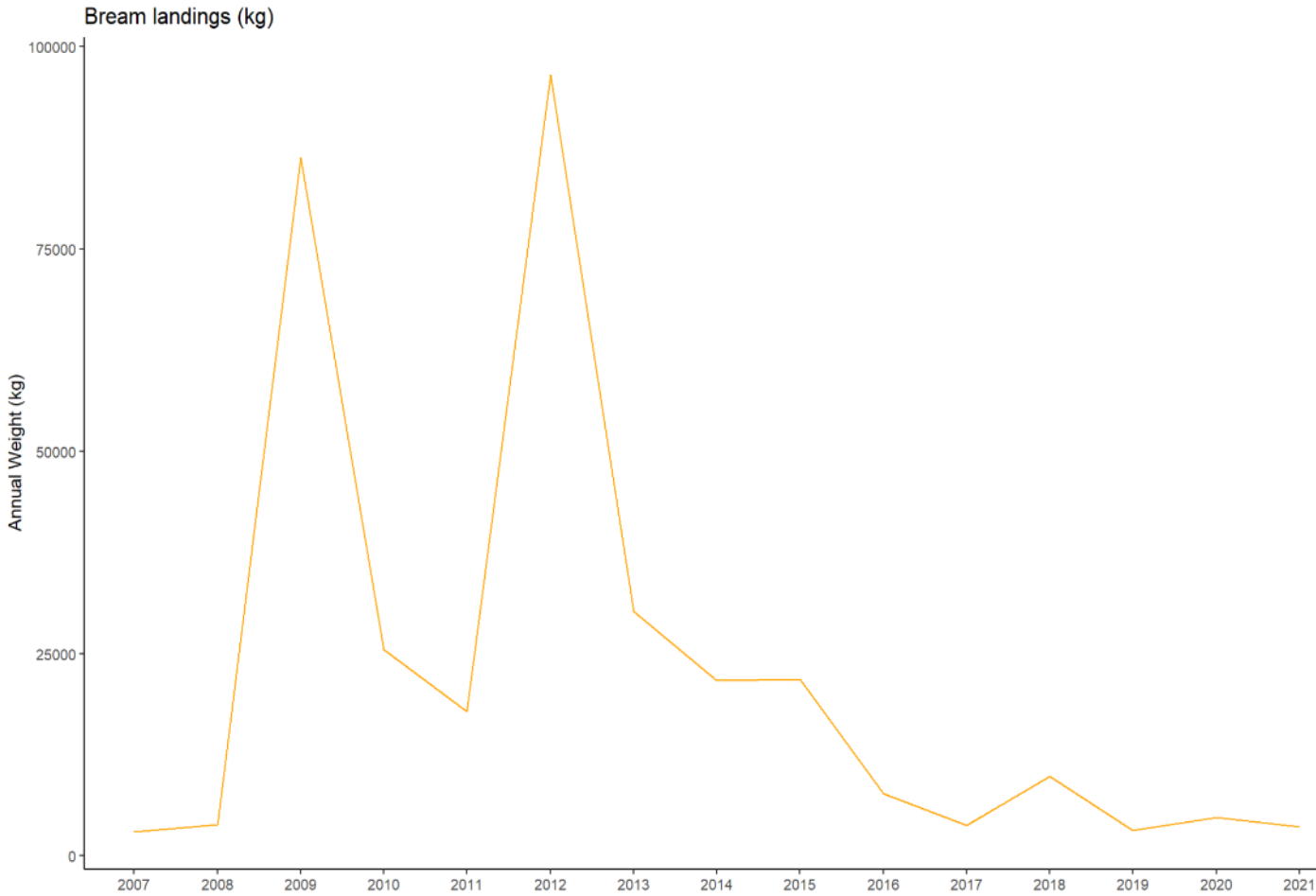
# The English Channel as a barrier



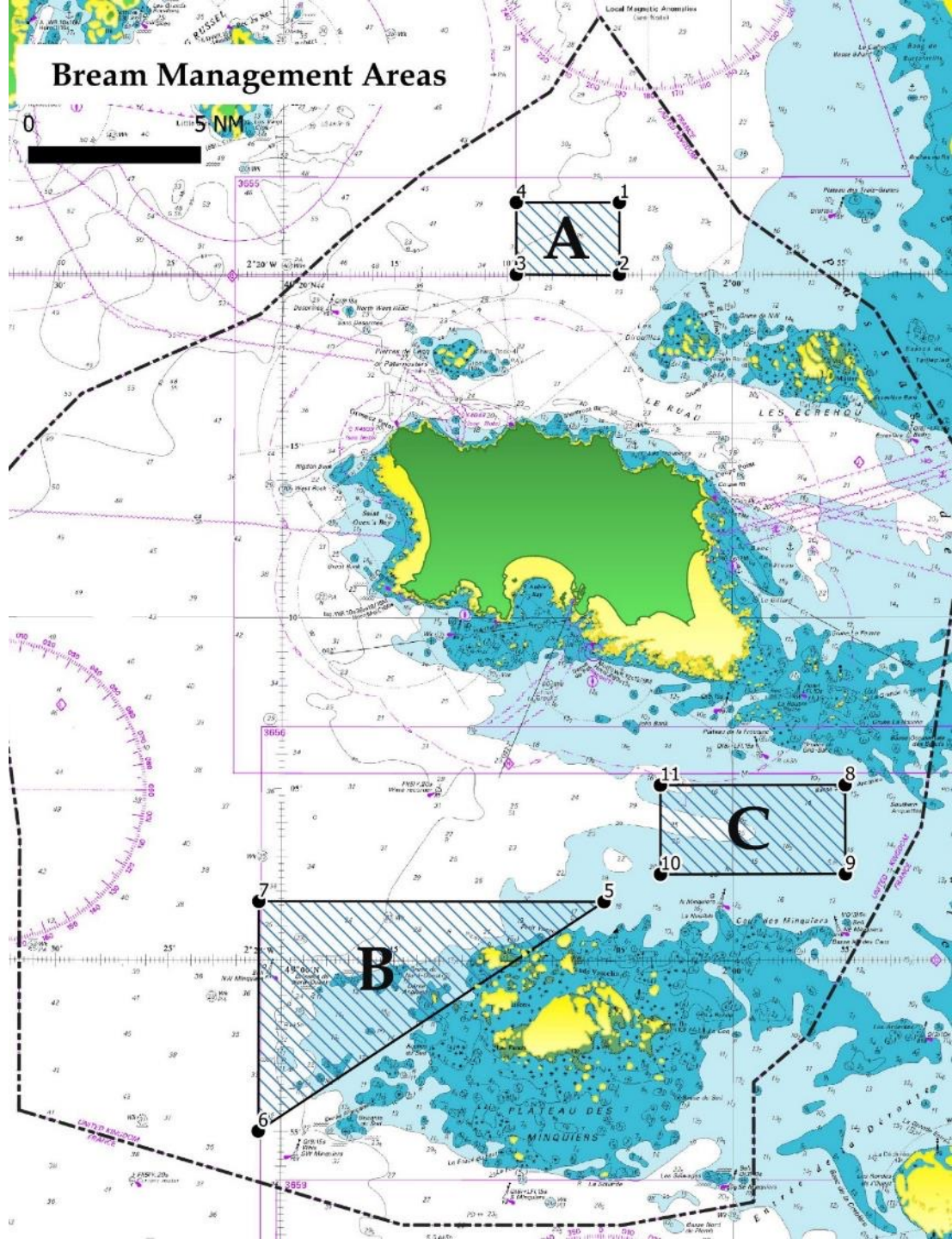
- Tidal currents create vortices around the Channel Islands. Water is trapped around Jersey.
- Vortices keep larvae in the Channel Islands region.
- Barren seabed and deep water north of Alderney stops seabed migration.
- Stratified water in east of English Channel doesn't suit warmer water species.
- Warm, shallow waters around Jersey allows earlier seasonal breeding.



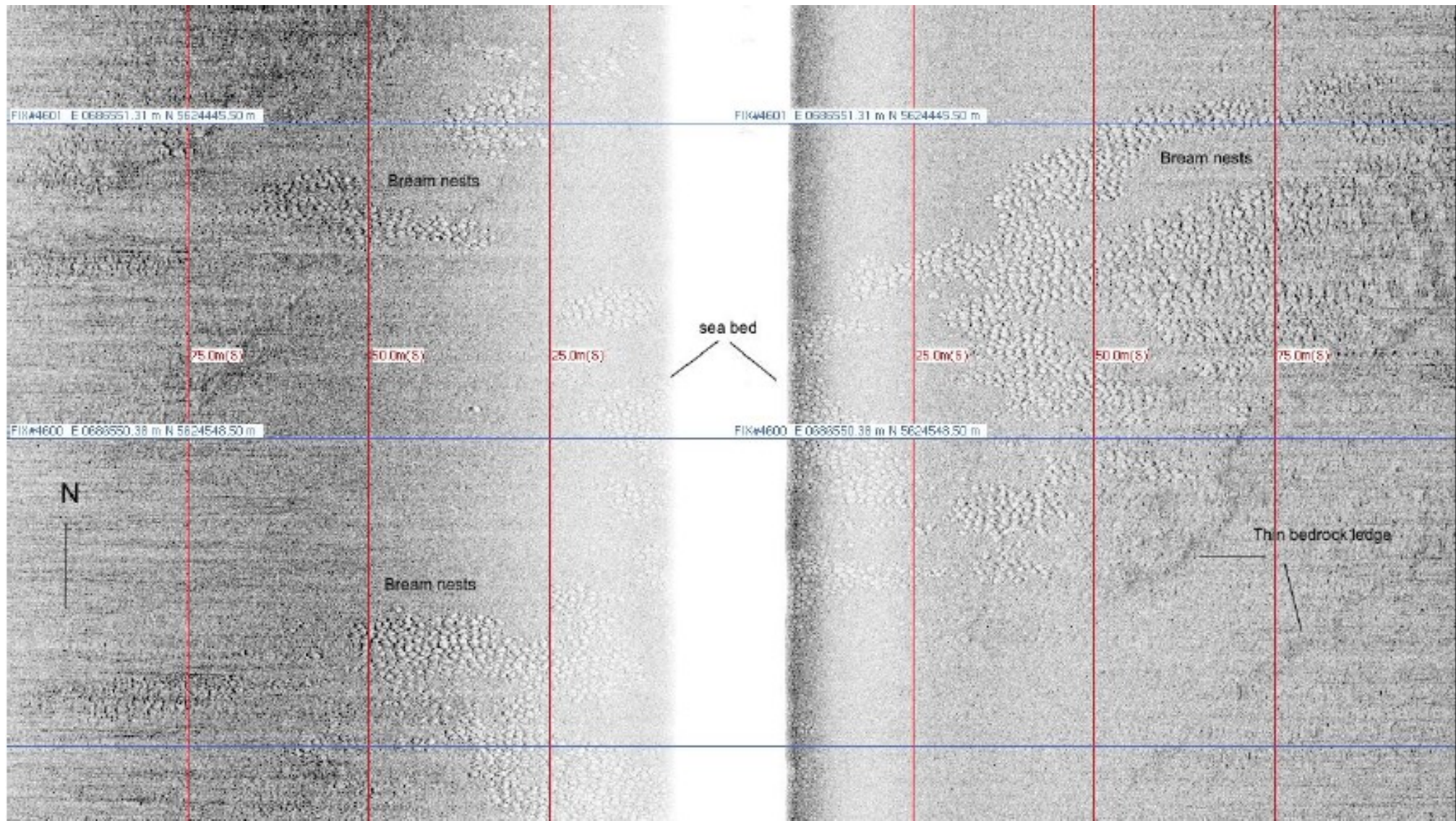
# Jersey Bream landings & total VMS beam trawl





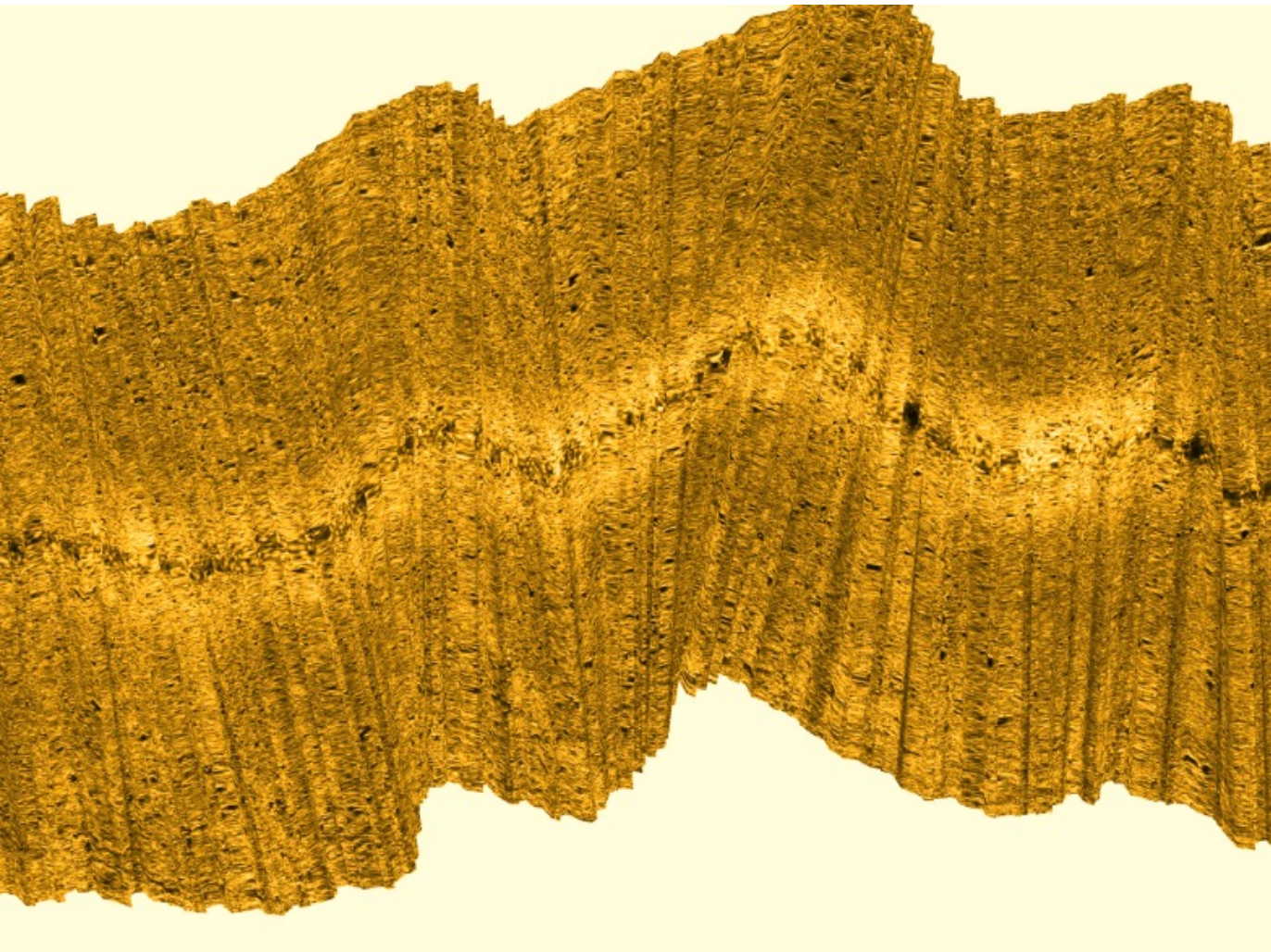




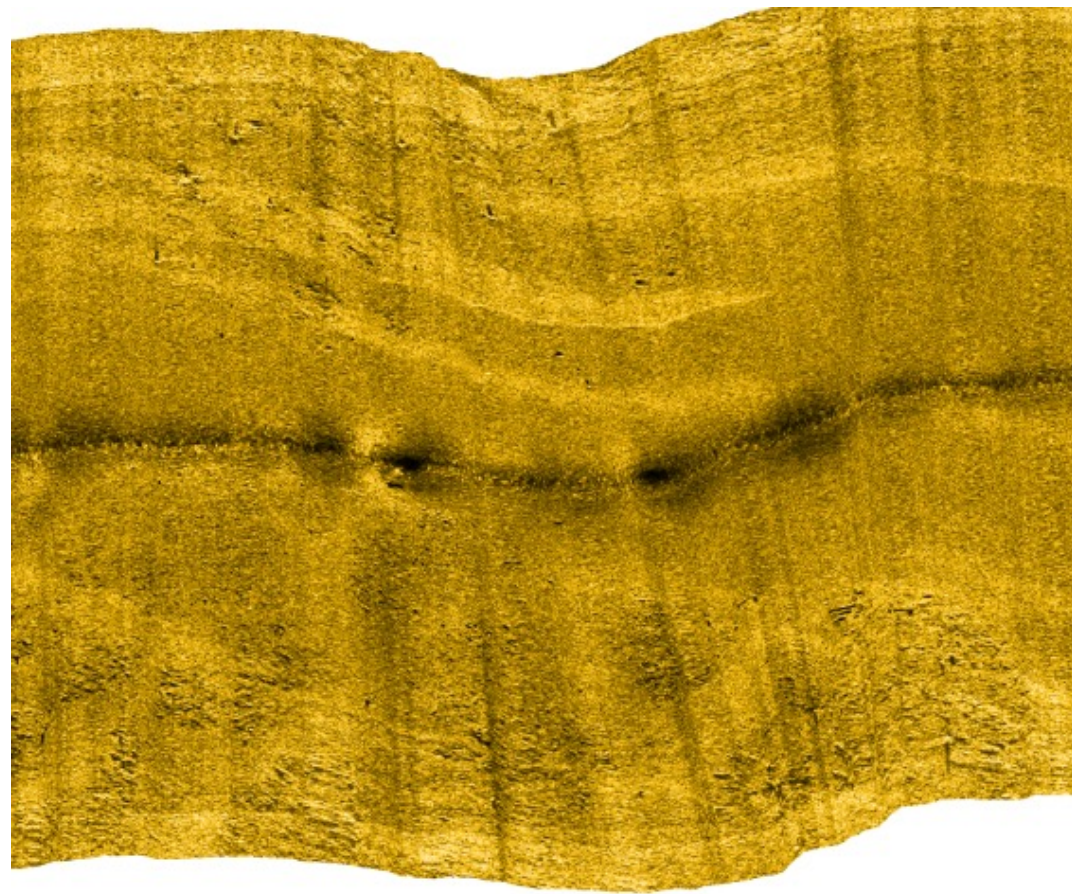


Sidescan sonar image showing the acoustic signature of bream nests off the Sussex coast , Clark and James, 2013)





Unreadable image



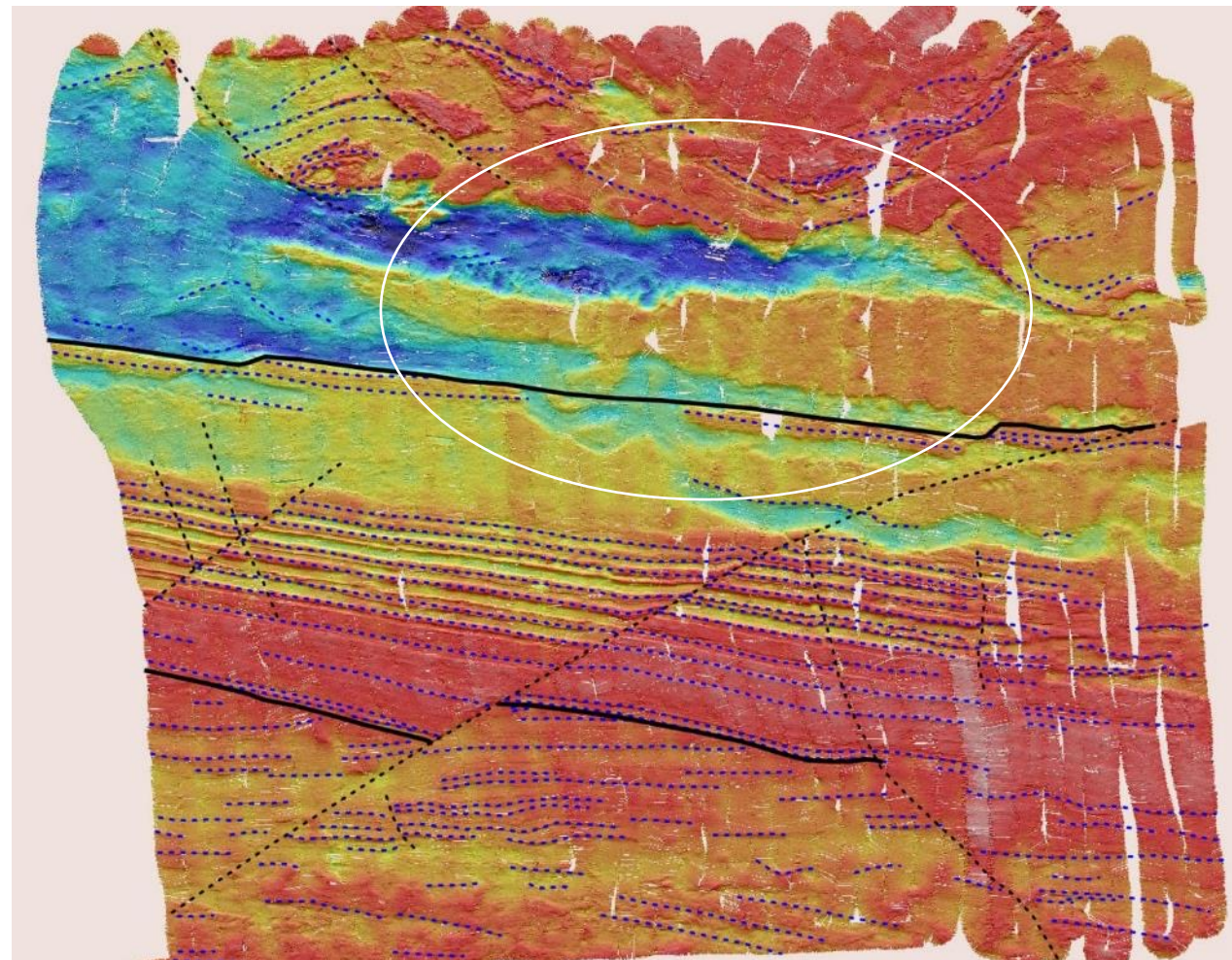
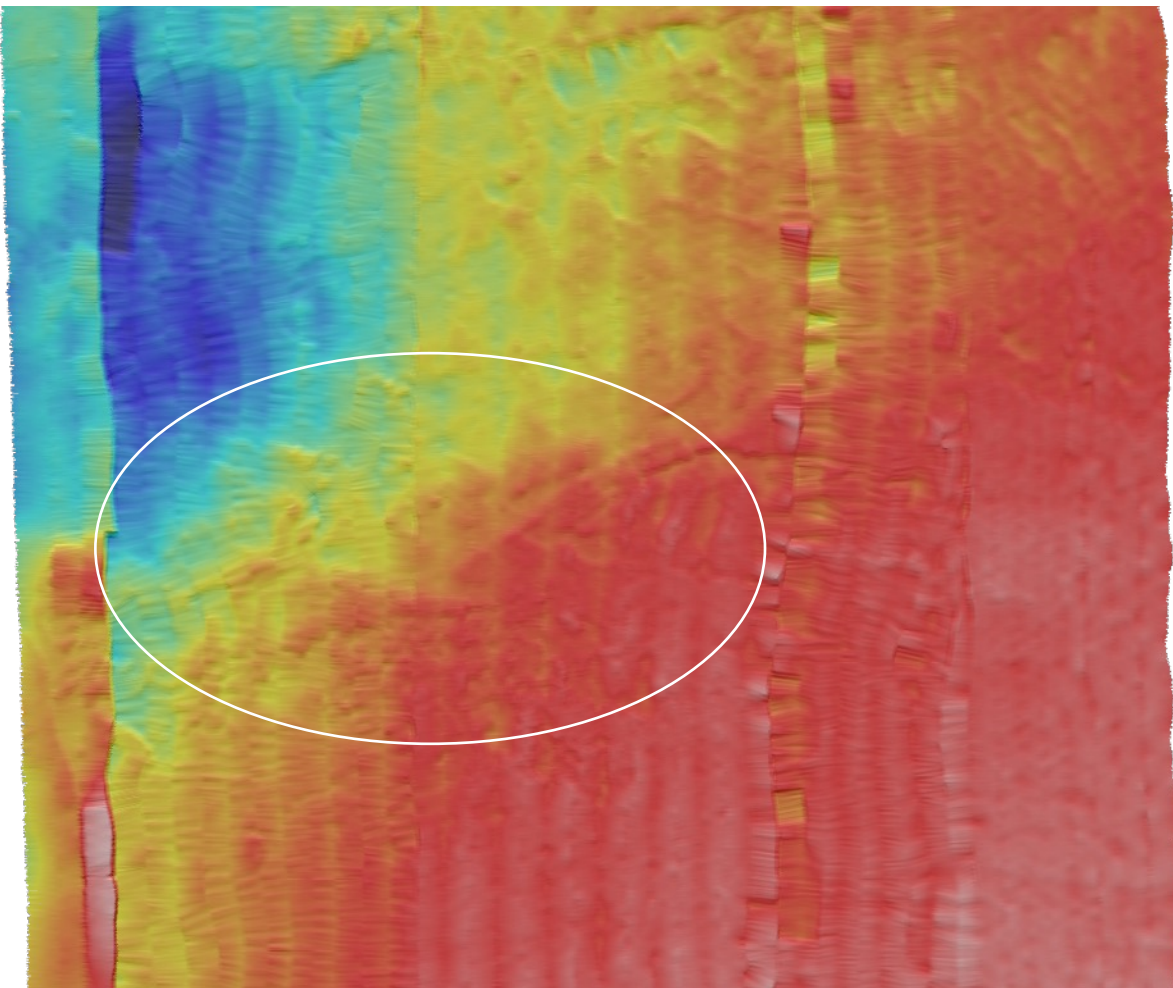
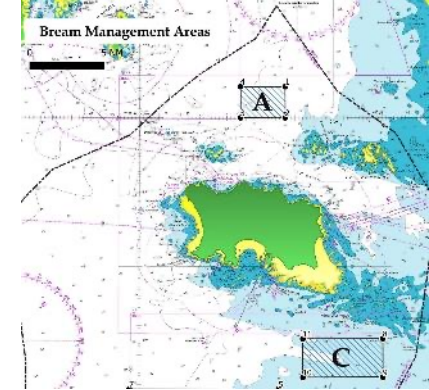
Almost readable image



# 2022 WASSP Multibeam ground survey

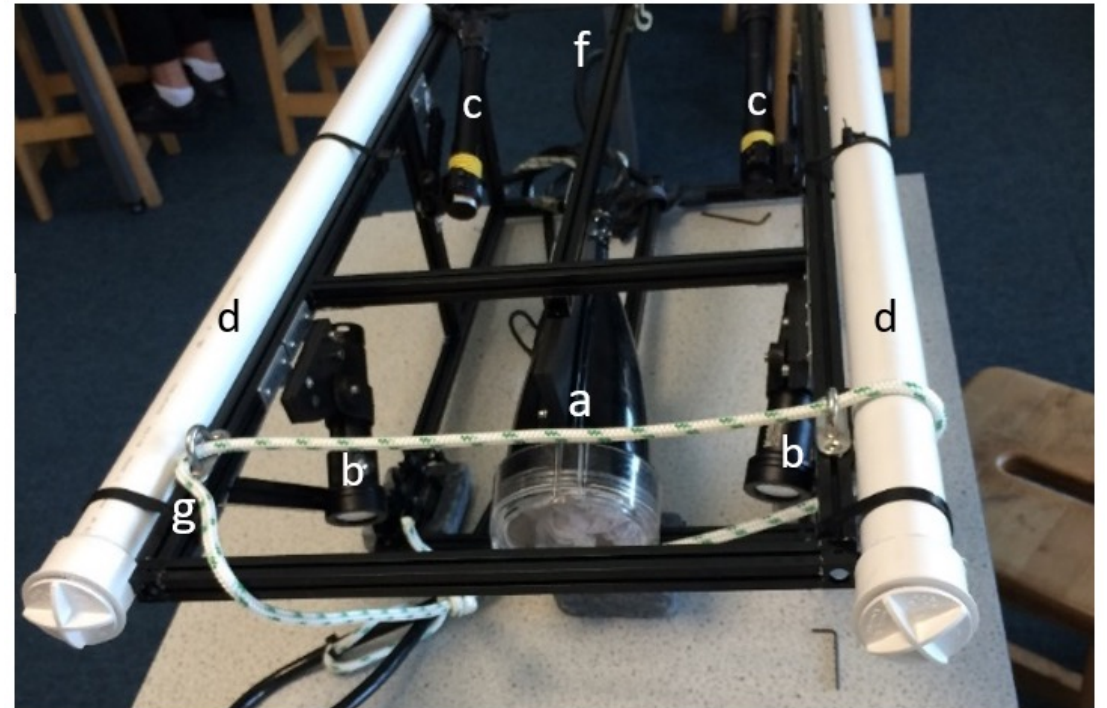
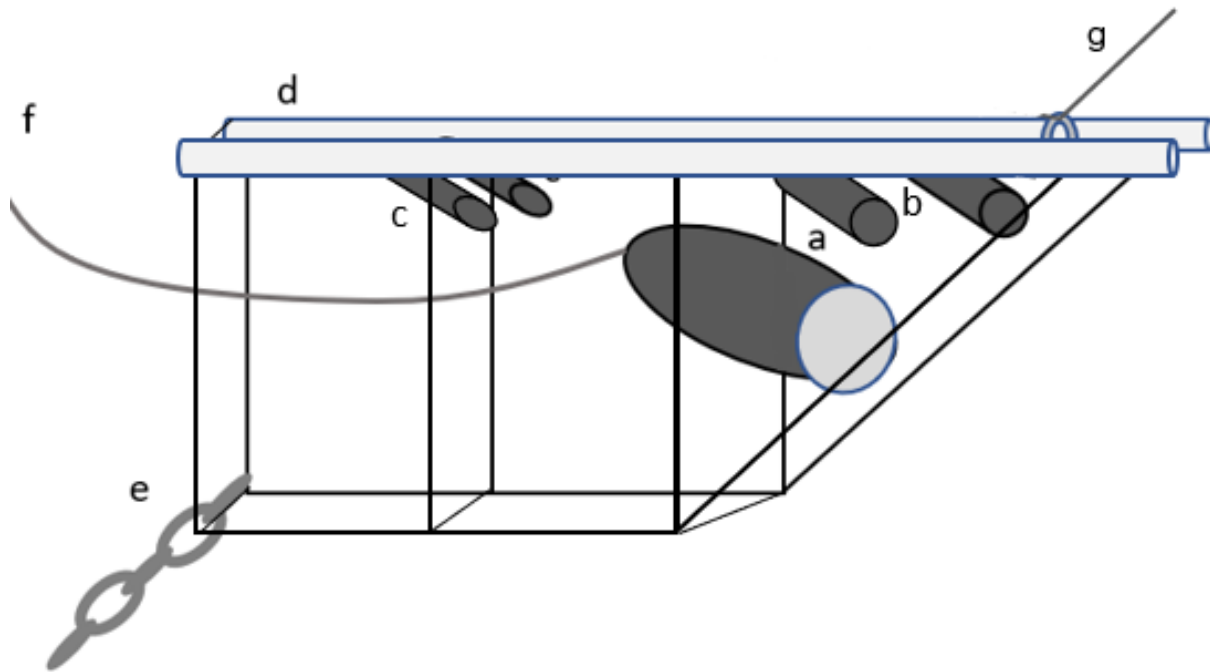
A.

C.





# 2022 video survey



a)

b)

Figure 3. Underwater towed video array a) Side view diagram and b) front view image showing the underwater video system (a), lights (b), lasers (c), buoyancy tubes (d), chain weight (e), cable (f), and tether (g).



Video captures of likely nests.





Large rocks cleaned of algae – possible nests





## 2023 Survey plan

Retry side scan survey from Cornwall IFCA vessel

Targeted visual surveys to determine:

- the range and extent of nesting grounds
- nesting / spawning period

Desktop study of potential further nesting sites based on seabed simulations.